

An elegant and efficient lantern with translucent diffuser provide a unique, comfortable light choice with symmetrical and glare free light distribution. Aesthetically designed sturdy construction ensures a long life against all weather condition, maintaining initial performances through the lifetime of the installation.

Product Description

- The luminaire comprises of die-cast aluminium flat top cover serving as a canopy for the fitting and die cast aluminium base.
- Spun aluminium reflector system encased in translucent UV protected polycarbonate diffuser for rotationally symmetrical distribution of light.
- Luminaire integrated with 30W LED.
- Luminaires suitable for mounting on 60mm OD pipe.
- Cable entries for through-wiring of mains supply cable.
- Integral constant current power supply
- Prewired with LED driver and suitable for operating on 240V, 50Hz single phase ac supply.
- Ordering guide : KL-5477-CCT (Colour Temperature)
- Available CCT : 3000K, 4000K, 5700K



Product Benefits

- High luminous efficiency at reduced wattage.
- Elegant, Functionality
- Environmental Friendly
- Dark sky compliant protects pedestrians from glare, in addition to preventing spill light above the horizontal plane.
- Sustainable LED technology offers durability and optimal light output with low power consumption.

Area of Application

Illuminating parks, Gardens, commercial complex, Residential roadways, Walkways, Streetscapes & office complex.

Available Finish

Pure polyester powder coated

- Graphite grey
- Anthracite grey
- Jet black





Technical Specifications

General

ID	: 5477
System Wattage	: 30W LED
Driver Integral	: Constant Current
Input Voltage	: 230-240Vac
Frequency	: 50-60Hz
Operating Voltage	: 100-277Vac
Operating Temperature	: -40°C~+50°C

Light Source

Light Source	: NICHIA
LED Lumens	: 4500 lm
CRI (Ra)	: >80
LED Colour Temperature	: 3000K / 4000K / 5700K

Driver

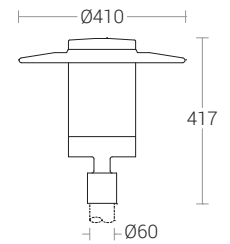
Power Supply	: Integral
Power Factor	: >0.95
THD	: <10%
Surge Protection	: 4KV
Efficiency	: >87%

Physical

Body	: Die Cast Aluminium flat top cover & Base
Reflector	: Spun Aluminium
Diffuser	: Translucent Polycarbonate
Mounting	: Suitable for Ø60mm OD Pipe
Finish	: Powder Coated Graphite Grey / Jet Black Anthracite Grey

Optical Performance

Colour Temperature	: 4000K
Luminous flux	: 1572 m
Light Distribution	: Symmetrical



Photometric Data

