

Nimba Street Light Cut off lantern, integral model, horizontal and vertical mounting. Improved long lasting protection against ingress of dust / insects inside optical compartment with top opening facility for maintenance.

### Product Description

- Luminaire body and top cover made of pressure die cast aluminium featuring high strength and anti corrosion.
- Integrated with 50W LED module.
- Polycarbonate optical lens
- Suitable for Mounting on 50mm OD pipe
- Cable entries for through-wiring of mains supply cable.
- Integral constant current power supply
- Prewired with LED driver and suitable for operation on 240V, 50Hz, single phase ac supply.
- Ordering guide : KL-4304-CCT (Colour Temperature).
- Available CCT : 3000K, 4000K, 5700K.



### Product Benefits

- Top cover retained by hinge for easy maintenance and held in closed position by spring loaded latch.
- Functionally versatile, strong and stable.
- Corrosion resistant and easy maintenance.
- Quick installation and low assembly costs.
- Sustainable LED technology offers durability and optimal light output with low power consumption.

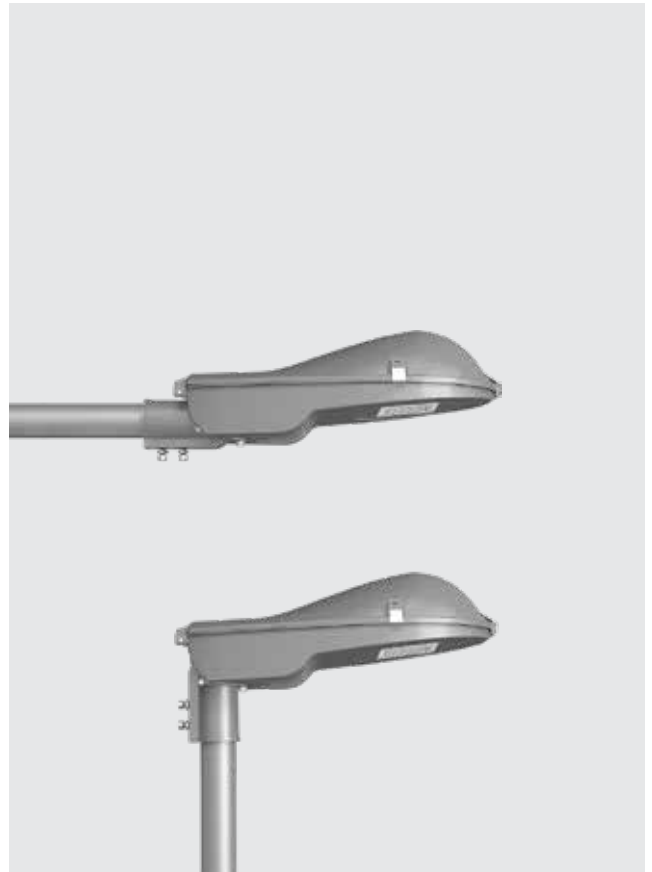
### Area of Application

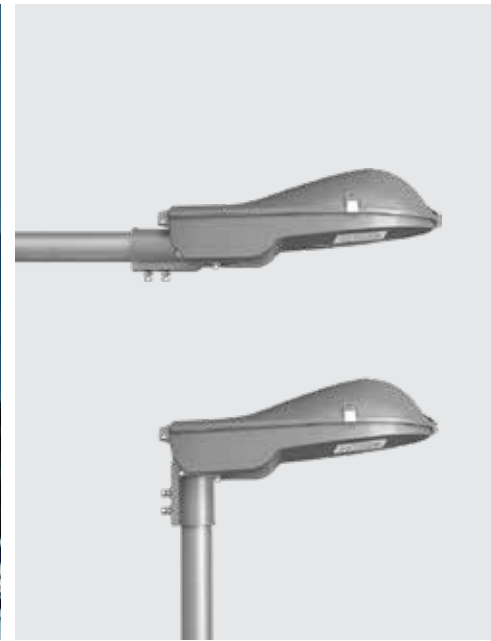
Illuminating parks, Gardens, commercial complex, streets & office complex.

### Available Finish

Pure polyester powder coated

- Traffic grey
- Black





**Technical Specifications**

**General**

ID	: 4304
System Wattage	: 50W LED
Driver Integral	: Constant Current
Input Voltage	: 230-240Vac
Frequency	: 50-60 Hz
Operating Voltage	: 100-277Vac
Operating Temperature	: -15°C~+50°C

**Physical**

Body	: Die-cast aluminium
Diffuser	: Polycarbonate optical lens
Mounting	: Suitable for Mounting on 50mm OD pipe
Finish	: Powder coated Traffic Grey / Black.

**Light Source**

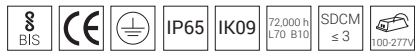
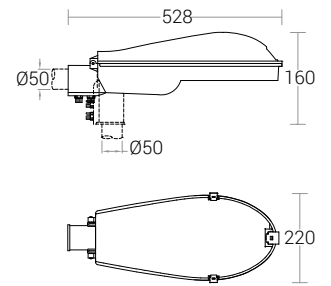
Light Source	: OSRAM / LUMILED
LED Lumens	: 7500 lm
CRI (Ra)	: >80
LED Colour Temperature	: 3000K / 4000K / 5700K

**Driver**

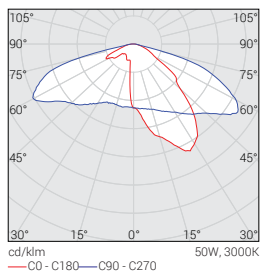
Power Supply	: Integral
Power Factor	: >0.95
THD	: <10%
Surge Protection	: 6KV
Efficiency	: >88%

**Optical Performance**

Colour Temperature	: 3000K / 4000K / 5700K
Luminaire Luminous flux	: 6128 / 5900 / 6224 lm
Light Distribution	: Type III



**Photometric Data**



Nimba Mini Street Light Cut off lantern, integral model, horizontal and vertical mounting. Improved long lasting protection against ingress of dust / insects inside optical compartment with top opening facility for maintenance.

### Product Description

- Luminaire body and top cover made of pressure die cast aluminium featuring high strength and anti corrosion.
- Integrated with 30W LED module.
- Polycarbonate optical lens
- Suitable for Mounting on 50mm OD pipe
- Cable entries for through-wiring of mains supply cable.
- Integral constant current power supply
- Prewired with LED driver and suitable for operation on 240V, 50Hz, single phase ac supply.
- Ordering guide : KL-5150-CCT (Colour Temperature).
- Available CCT : 3000K, 4000K, 5700K.



### Product Benefits

- Top cover retained by hinge for easy maintenance and held in closed position by spring loaded latch.
- Functionally versatile, strong and stable.
- Corrosion resistant and easy maintenance.
- Quick installation and low assembly costs.
- Sustainable LED technology offers durability and optimal light output with low power consumption.

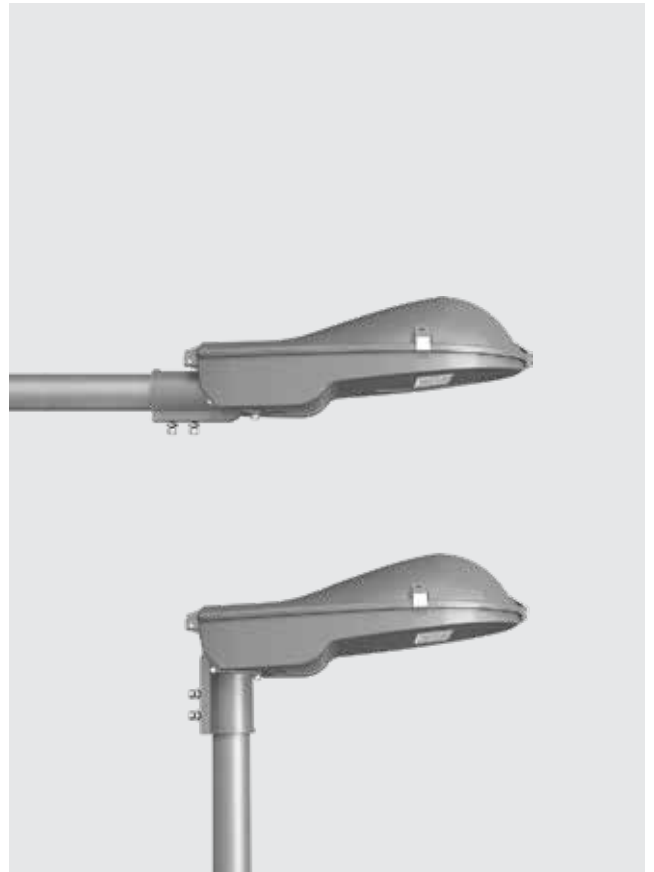
### Area of Application

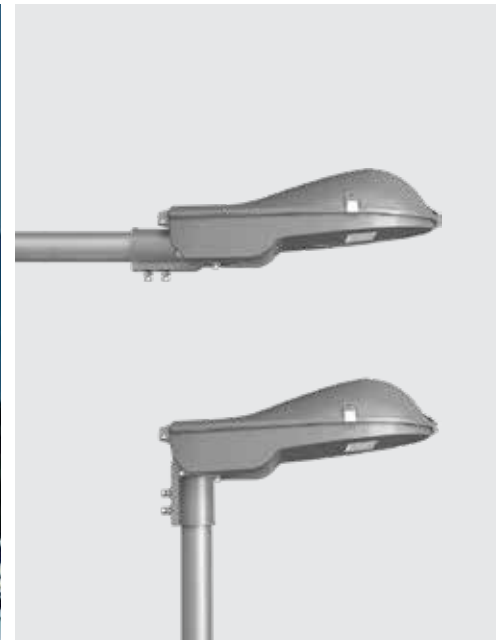
Illuminating parks, Gardens, commercial complex, streets & office complex.

### Available Finish

Pure polyester powder coated

- Traffic grey
- Black





**Technical Specifications**

**General**

ID	: 5150
System Wattage	: 30W LED
Driver Integral	: Constant Current
Input Voltage	: 230-240Vac
Frequency	: 50-60 Hz
Operating Voltage	: 100-277Vac
Operating Temperature	: 0°C~+50°C

**Light Source**

Light Source	: NICHIA
LED Lumens	: 4500 lm
CRI (Ra)	: >80
LED Colour Temperature	: 3000K / 4000K / 5700K

**Driver**

Power Supply	: Integral
Power Factor	: >0.95
THD	: <10%
Surge Protection	: 4KV
Efficiency	: >85%

**Physical**

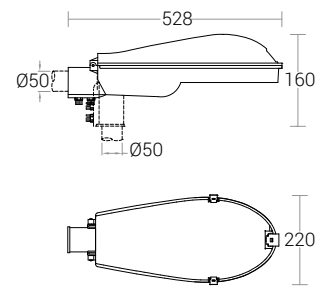
Body	: Die-cast aluminium
Diffuser	: Polycarbonate optical lens

Mounting : Suitable for Mounting on 50mm OD pipe

Finish : Powder coated  
Traffic Grey / Black.

**Optical Performance**

Colour Temperature	: 3000K / 4000K / 5700K
Luminaire Luminous flux	: 2976 / 3389 / 3245 lm
Light Distribution	: Type II



**Photometric Data**

