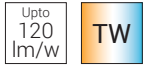


K-LITE

Line n Dot - Linear Wall Washer

Power: 20W 30W
Length: 312mm 462mm



Features

- Nichia LED's
- CRI Ra>80 (>90 On Request)
- SDCM ≤ 3
- L70 / B10 @ 60,000 Hrs



Options

- CCT : 3000K / 4000K / 5700K or TW 2700K to 5700K
- Driver options



L2: Vaccum Metalized Chrome Finish, UGR <12

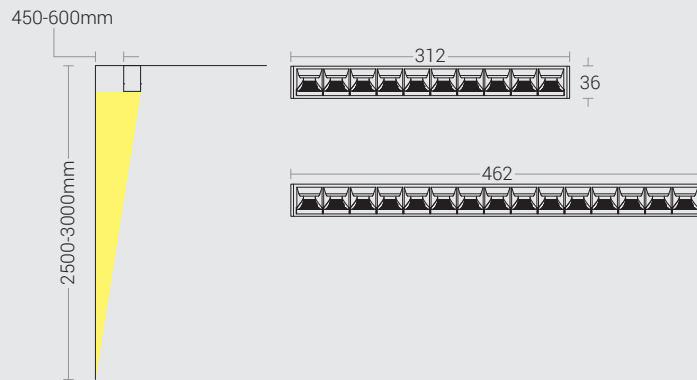
Beam Angle



SURFACE MOUNTED



Dimension in mm

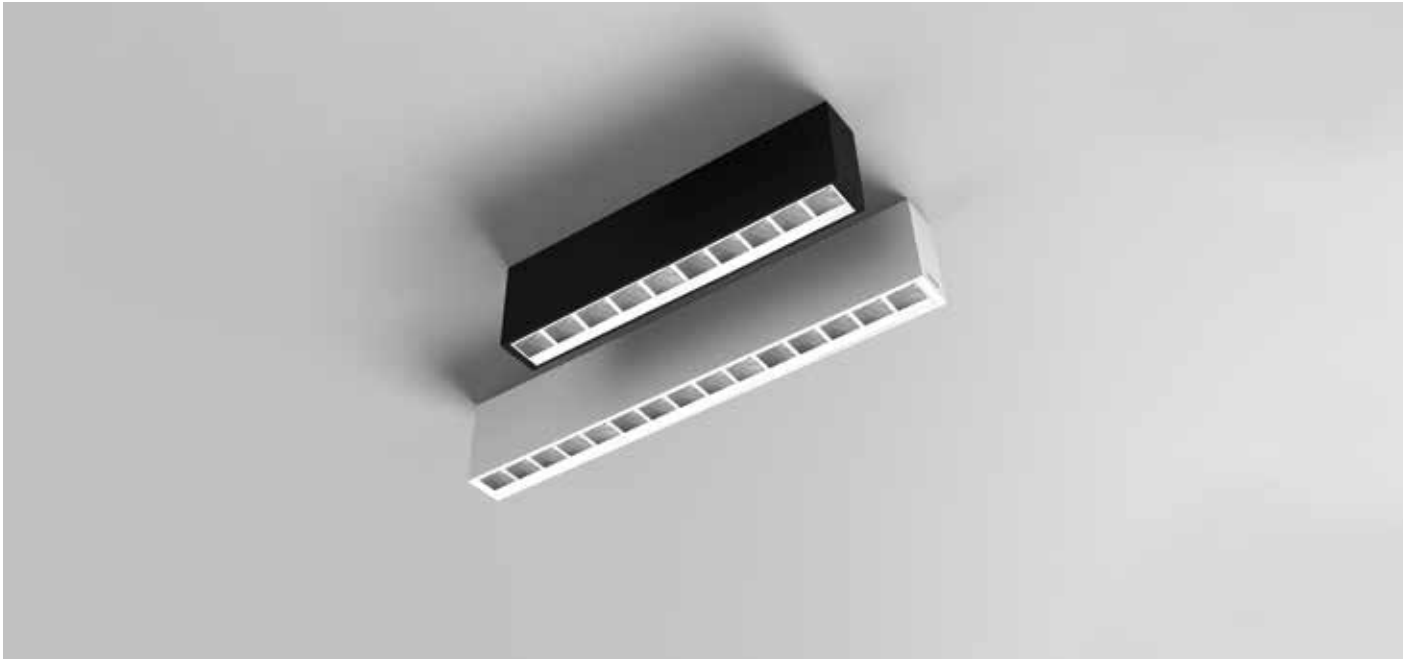


Housing Colour

- High-quality aluminium with powder coated finish in Black fine texture | White fine texture | Grey fine texture



L2 - Wall Wash



Technical Specifications

General

Driver	: Constant Current
Input Voltage	: 220-240Vac
Operating Temperature	: -15°C~+50°C

Light Source

Light Source	: NICHIA
CRI (Ra)	: >80 (>90 On Request)
LED Colour Temperature	: 3000K / 4000K / 5700K

Optical

Efficiency	: >90%
Tilt	: Fixed
Beam Angle	: Wall Wash
Diffuser/Lens Material	: Polycarbonate
Diffuser Finish	: Vacuum Metalized Chrome Finish
UGR	: <12

Physical

Body	: High-Grade Aluminium with Die-cast Endcaps
Mounting	: Surface Mounted
Finish	: White / Black / Grey

Driver

Power Supply	: Integral
Power Factor	: >0.90
THD	: <10%
Surge Protection	: 2 - 3KV
Efficiency	: >85%



Ordering Guide

Surface Mounted - Wall Washer

ID	Wattage	Dimension (mm)
3490	20W	312 x 36 x 75
3491	30W	462 x 36 x 75