

High efficiency LED flood lights designed to provide directional spot light. The product design and construction of the luminaires are characterized by high luminous efficiency, an extremely long service life and uniform illuminance. Their sturdy construction makes them particularly suitable for areas where a high level of robustness is required.

### Product Description

- Extruded aluminium hood cover integrated with die-cast module and extruded aluminium alloy (grade 6063) tube.
- Heat resistant polycarbonate optical lens.
- Mounting bracket to facilitate proper aiming of the luminaire at desired angle.
- Available in 10°, 28° & 45° beam angles
- Cable entries for through-wiring of mains supply cable.
- Integral constant current power supply
- CRI (Ra) : >80
- Suitable for operation on 240V, 50Hz single phase ac supply.
- Ordering guide : KL-6805-CCT (Colour Temperature)
- Available CCT : 3000K, 4000K, 5700K (RGB & Special colour on request)



### Product Benefits

- High luminous efficiency at reduced wattage.
- Elegant, Robust design
- Sustainable LED technology offers durability and optimal light output with low power consumption.

### Area of Application

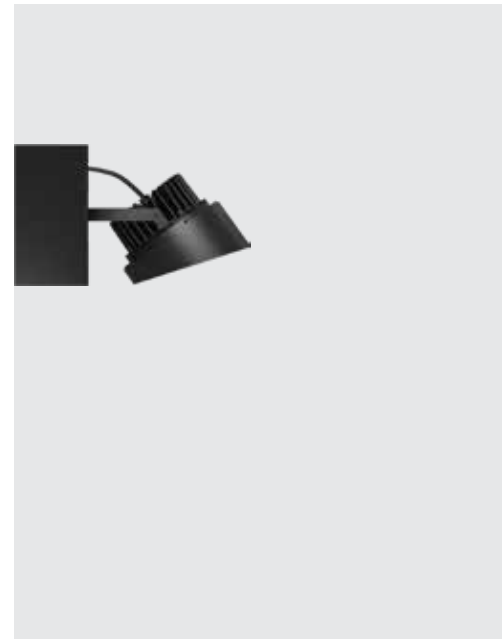
Architectural and building facade lighting, Pathways, Parks, Sculptures, Structures and Security lighting.

### Available Finish

Pure polyester powder coated

- Graphite grey
- Anthracite grey
- Jet black





### Technical Specifications

#### General

ID	: 4287
System Wattage	: 30W LED
Driver Integrated	: Constant Current
Input Voltage	: 230-240Vac
Frequency	: 50-60Hz
Operating Voltage	: 100-277Vac
Operating Temperature	: -15°C~+50°C

#### Light Source

Light Source	: NICHIA
LED Lumens	: 4500 lm
CRI (Ra)	: >80
LED Colour Temperature	: 3000K / 4000K / 5700K RGB & Special Colours On Request

#### Physical

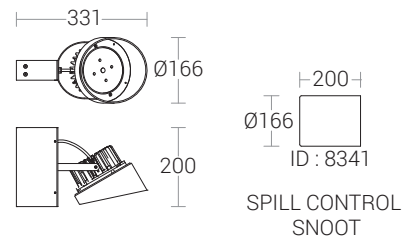
Body	: Die-Cast Aluminium with Extruded Aluminium Tube
Diffuser	: Polycarbonate Optical Lens
Mounting	: Surface - Wall
Finish	: Powder Coated Graphite Grey / Jet Black Anthracite Grey

#### Driver

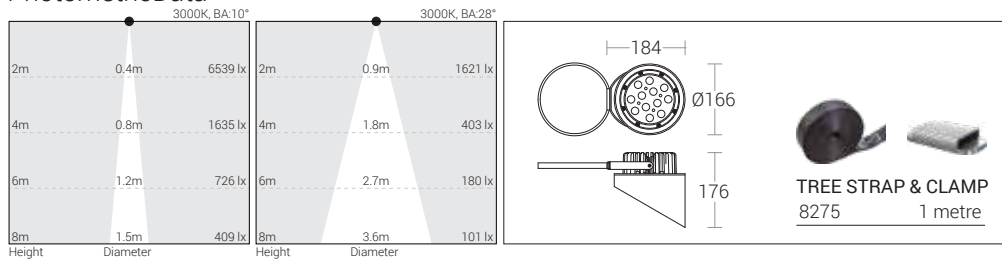
Power Supply	: Integral
Power Factor	: >0.90
THD	: <10%
Surge Protection	: 4KV
Efficiency	: >85%
Dimmable Option	: Analog / Dali & RGB Controller

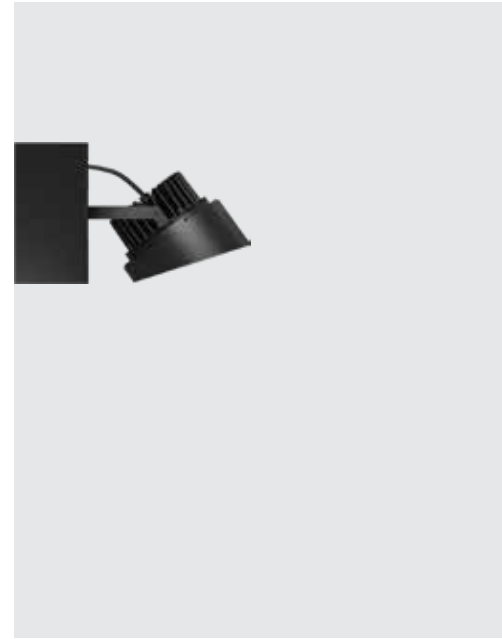
#### Optical Performance

Colour Temperature	: 3000K / 4000K / 5700K
Luminous flux	: 2766 / 3319 / 3082 lm
Beam Angle	: 10° / 28° / 45°



### PhotometricData





## Technical Specifications

### General

ID	: 4288
System Wattage	: 45W LED
Driver Integrated	: Constant Current
Input Voltage	: 230-240Vac
Frequency	: 50-60Hz
Operating Voltage	: 100-277Vac
Operating Temperature	: -15°C~+50°C

### Light Source

Light Source	: NICHIA
LED Lumens	: 6750 lm
CRI (Ra)	: >80
LED Colour Temperature	: 3000K / 4000K / 5700K RGB & Special Colours On Request

### Physical

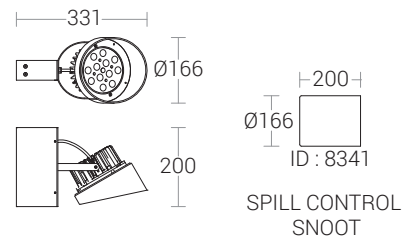
Body	: Die-Cast Aluminium with Extruded Aluminium Tube
Diffuser	: Polycarbonate Optical Lens
Mounting	: Surface - Wall
Finish	: Powder Coated Graphite Grey / Jet Black Anthracite Grey

### Driver

Power Supply	: Integral
Power Factor	: >0.95
THD	: <10%
Surge Protection	: 6KV
Efficiency	: >85%
Dimmable Option	: Analog / Dali & RGB Controller

### Optical Performance

Colour Temperature	: 3000K / 4000K / 5700K
Luminous flux	: 3772 / 4015 / 4272 lm (28°)
Beam Angle	: 10° / 28° / 45°



## Photometric Data

