

TRIO

Soft Light

Geometry of a triad and appearance of soft light.
Easy to install and adjust.

Emitting light both up to the ceiling and down to the work station. It supplies homogenous glare-free light and maximum level of visual comfort. It is a new favorite of modern simple yet stylish office lighting.

K-LITE

TRIO

Power : 30W / 40W 60W
 Length : 1200mm 2400mm

Upto
100
lm/w

Features

- NICHIA LED's
- 3000K / 4000K / 5700K
- Ra>80 (>90 On Request)
- SDCM ≤ 3
- L70 / B10 @ 60,000 Hrs
- Standard suspension kit 1M



Options

- Through wiring
- Dimmable options

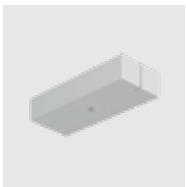


Beam Angle



120°
Diffused

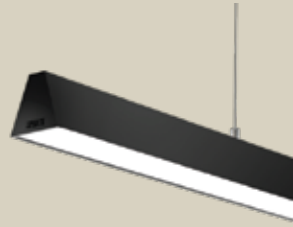
Accessories



Canopy Kit

For control unit
 Bespoke Colour Options

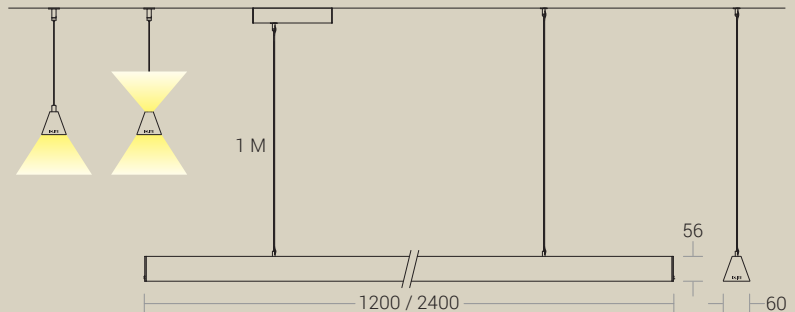
PENDANT
DIRECT



PENDANT
DIRECT / INDIRECT



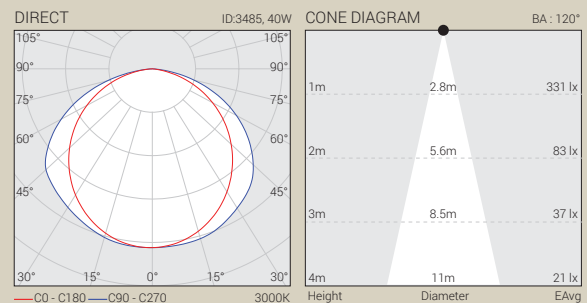
Dimension in mm

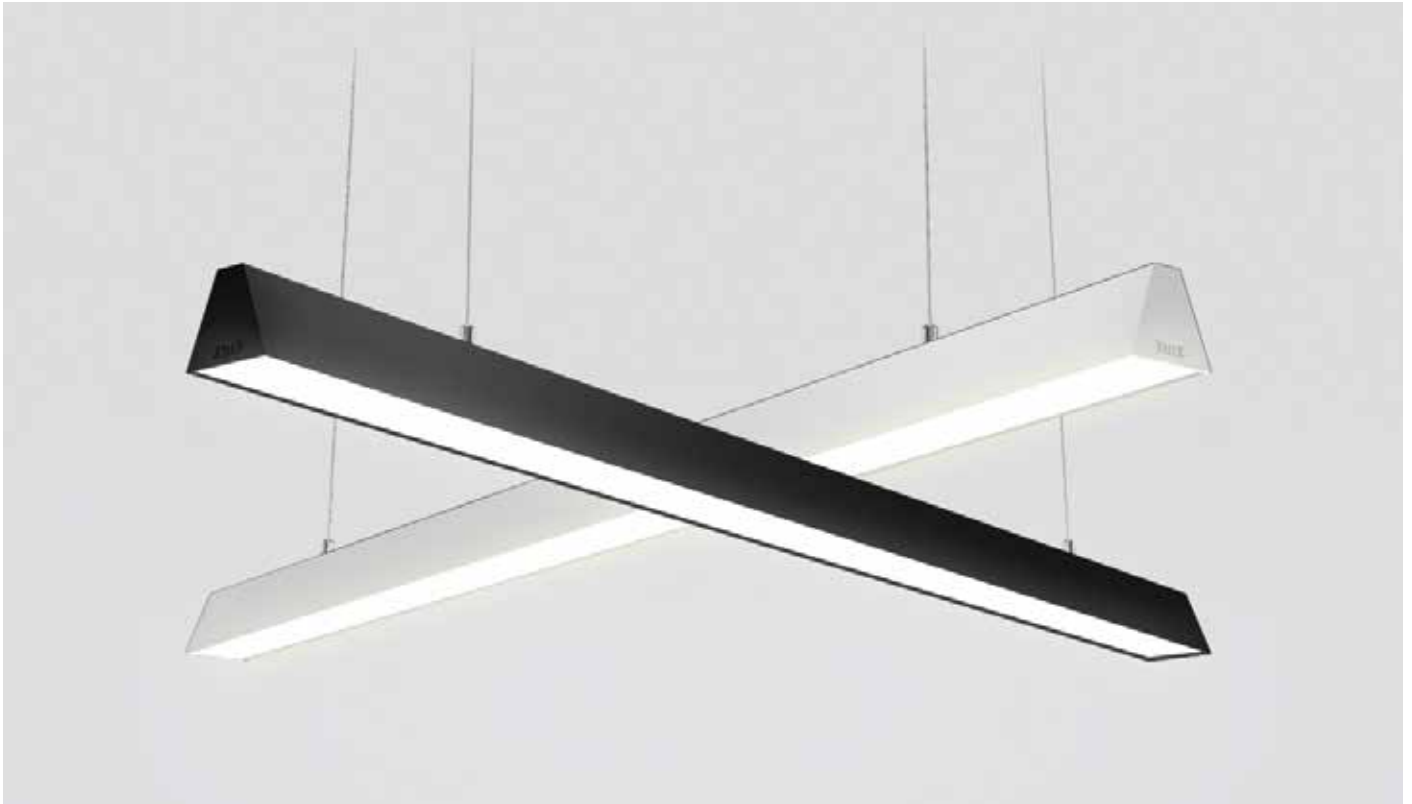


Housing Colour

- High-quality aluminium with powder coated finish in RAL9005 Black fine texture | RAL9016 White fine texture | RAL9006 Grey fine texture

Light Distribution





Technical Specifications

General

Driver : Constant Current
 Input Voltage : 220-240Vac
 Operating Temperature : +25°C~+55°C

Light Source

Light Source : NICHIA
 CRI (Ra) : >80 (>90 On Request)
 LED Colour Temperature : 3000K / 4000K / 5700K

Optical

Tilt : Fixed
 Beam Angle : 120°
 Diffuser Material : Polycarbonate
 Diffuser Finish : Opal
 UGR : <19

Physical

Body : High-Grade Aluminium with Die-cast Endcaps
 Mounting : Suspended
 Finish : White(RAL9016)
 Black(RAL9005)
 Grey (RAL 9006)

Driver

Power Supply : Integrated
 Power Factor : >0.90
 THD : <10%
 Surge Protection : 2KV-3KV
 Efficiency : >85%

Ordering Guide

Pendant - Direct

ID	Wattage	Dimension (mm)
3484	30W	1200 x 60 x 56
3485	40W	1200 x 60 x 56
3486	60W	2400 x 60 x 56

Pendant - Direct-Indirect

ID	Wattage	Dimension (mm)
3433	30W & 10W	1200 x 60 x 56
3434	40W & 10W	1200 x 60 x 56
3441	60W & 20W	2400 x 60 x 56