

Our IP67 profiles are modular and offers an innovative lighting solution in constrained space which require linear lighting. The profiles are made of extruded aluminium and are available in powder coated black / traffic white and anodised aluminium finish options. The aluminium profile and the polyurethane encapsulation lends to IP67 protection class. Various mounting options are available making it a versatile product for various applications.

Product Features

- Luminaire made of extruded aluminium (grade 6063) for better thermal management.
- Translucent polyurethane encapsulation.
- Mounting tray for better cable management with slide fit system.
- Suitable for surface mounting.
- IP67 connector on both ends and can be easily installed via mounting tray.
- Constant voltage LED driver 24Vdc Non integral (to be ordered with suitable power supply).
- Multiple lengths available.
- Available CCT : 2700K, 4000K (Special colours on request)



Product Benefits

- Attractive high quality robust housing.
- Sturdy construction in order to maintain performance of the luminaire.
- Quick & simple installation.
- Flexible deployment options with a wide spectrum of applications.

Area of Application

Hotel & Resorts, Staircase Lighting, Malls, Restaurants, Receptions, Shopping Complex, Commercial & Business Centers, Residential Lighting and similar applications.

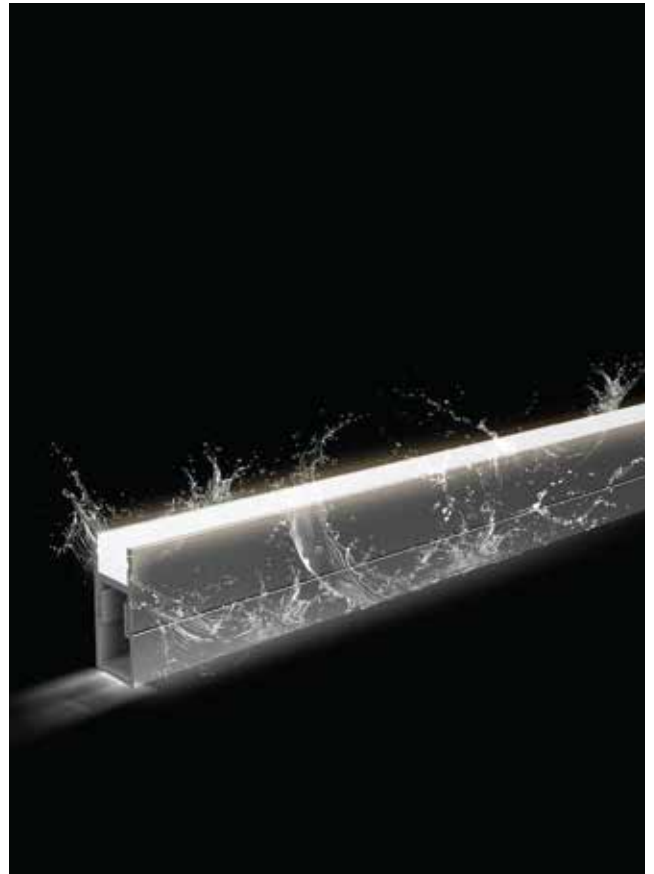
Available Finish

Pure polyester powder coated

RAL 9004 Black

RAL 9016 Traffic White

Anodised Aluminium



K-LITE

Form-16

Power : 5W 10W 15W 20W
Length : 500mm 1000mm 1500mm 2000mm

Features

- CRI Ra>90
- SDCM ≤ 3
- L80 / B10 @ 60,000 Hrs
- For ready use with IP67 connectors
- Mounting tray for better cable management with slide fit system.

Options



Accessories

Cabling Accessories



ID	Description	Dimension (mm)
68319	End cap Male / Female - 2 pin	-
68320/68321	Leader Cable Male / Female - 2 pin	0.5m Cable
68322	Jumper Cable - 2 pin	1m Cable

* Fixture manufactured to desired length with multiples of 100mm and factory IP rated tested (not field cuttable)

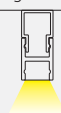
K-LITE



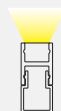
Dimension in mm



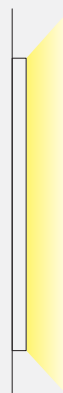
Ceiling mounting



Floor mounting



Vertical surface mounting



Housing Colour

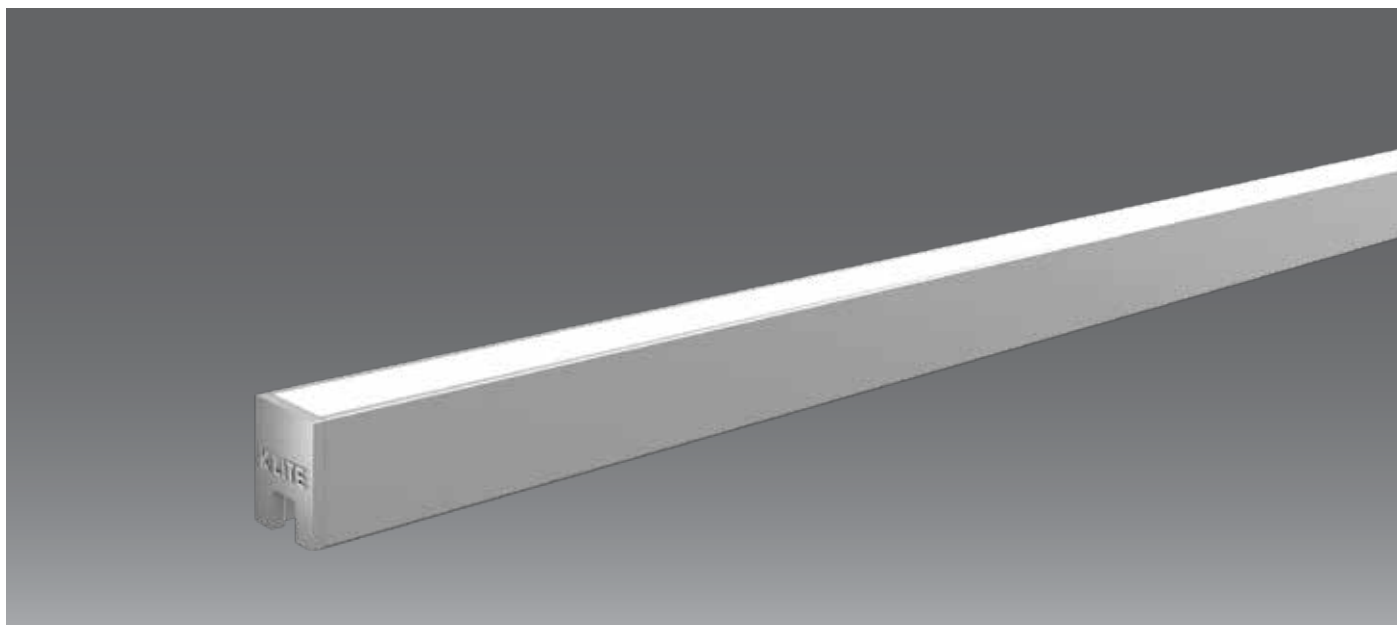


High-quality aluminium with powder coated finish in RAL9004 Black | RAL9016 Traffic White | Anodised Aluminium



OPEN SOURCE

Light Distribution refer online



Technical Specifications

Light Source

Light Source	: LED
CRI (Ra)	: >90
LED Colour Temperature	: 2700K / 4000K (Special colours on request)

Physical

Body	: Extruded Aluminium
Mounting	: Surface
Finish	: RAL9016 Traffic White / RAL9004 Black / Anodized Aluminium

General

Driver	: Constant Voltage
Operating Temperature	: -15°C~+50°C
Operating Voltage	: 24Vdc
Power Supply	: Non Integral 24V PSU (IP67)

Specification

Power (W/m)	10W/m
Max.length (m)	2 mts
Max.serial run length (m)	5 mts
Max.ambient temp.(Ta _{max})	50°C

Optical

Tilt	: Fixed
Beam Angle	: 120° (Diffused)
Diffuser Material	: Translucent Polyurethane Encapsulation

- The given data are standard values. Due to tolerances of the manufacturing process and the electrical components, photometric values and electrical power can vary up to 10 - 12%.
- Luminous flux upto -40% with opal transmission.
- In IP67 encapsulated products, tolerance in colour temperature can occur.
- Light distribution refer online



Ordering Guide

Surface - Direct

ID	Wattage	Dimension (mm)
23247	5W	500 x 16 x 34
23247	10W	1000 x 16 x 34
23247	15W	1500 x 16 x 34
23247	20W	2000 x 16 x 34

Note : Luminaire operating voltage is 24Vdc, to be ordered with suitable power supply and accessories.