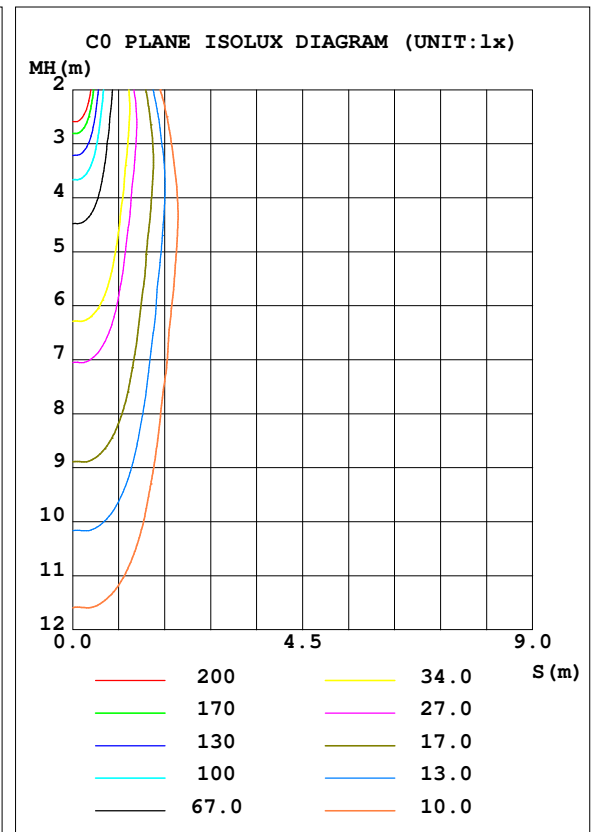
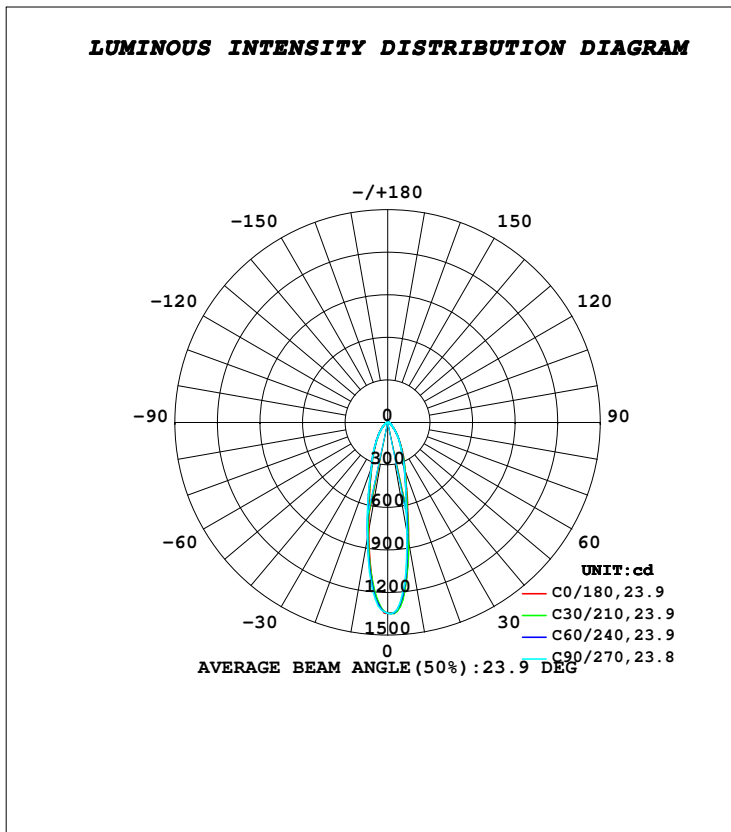


LUMINAIRE PHOTOMETRIC TEST REPORT

Test:U:230.13V I:0.0261A P:5.9260W PF:0.9862 Freq:49.99Hz Lamp Flux:726.015x1 lm		
NAME: TRIOSCAPE - BRACKET	TYPE:FLOOD LIGHTS	WEIGHT:0.470 Kg
SPEC.:5700K, LUMILED, BA-25°, CRI 70	DIM.: 83 x 116 x 110	SERIAL No.:INT/2024/05/89B
MFR.: K-LITE	SUR.:	Shielding Angle:

DATA OF LAMP		PHOTOMETRIC DATA			
MODEL	KL-7057	Imax (cd)	1350	S/MH (C0/180)	0.39
NOMINAL POWER (W)	6	LOR (%)	73.6	S/MH (C90/270)	0.41
RATED VOLTAGE (V)	230	TOTAL FLUX (lm)	534.52	η UP, DN (C0-180)	0.0, 36.6
NOMINAL FLUX (lm)	726.015	CIE CLASS	DIRECT	η UP, DN (C180-360)	0.0, 37.0
LAMPS INSIDE	1	η up (%)	0.0	CIBSE SHR NOM	0.50
TEST VOLTAGE (V)	230	η down (%)	73.6	CIBSE SHR MAX	0.50



C Range: 0 - 360DEG
C Interval: 10.0DEG
Test Speed: HIGH
Temperature: 25.8DEG
Operators: K-LITE
Test Date: 24 July 2024

γ Range: 0 - 90DEG
γ Interval: 1.0DEG
Test System: EVERFINE GO-R5000_V2 SYSTEM V2.00.417
Humidity: 43.5%
Test Distance: 2.001m [K=1.0000]
Remarks:

APPLICABLE ID - KL-7052