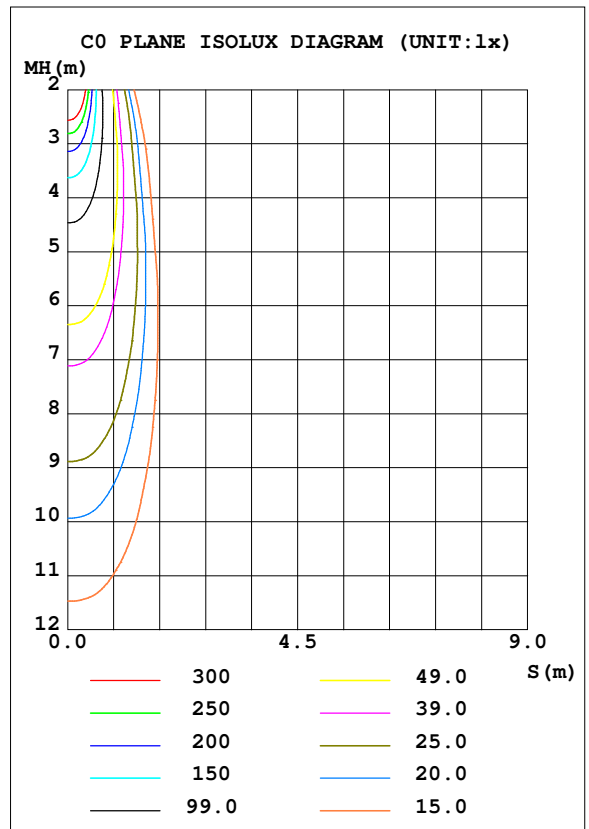
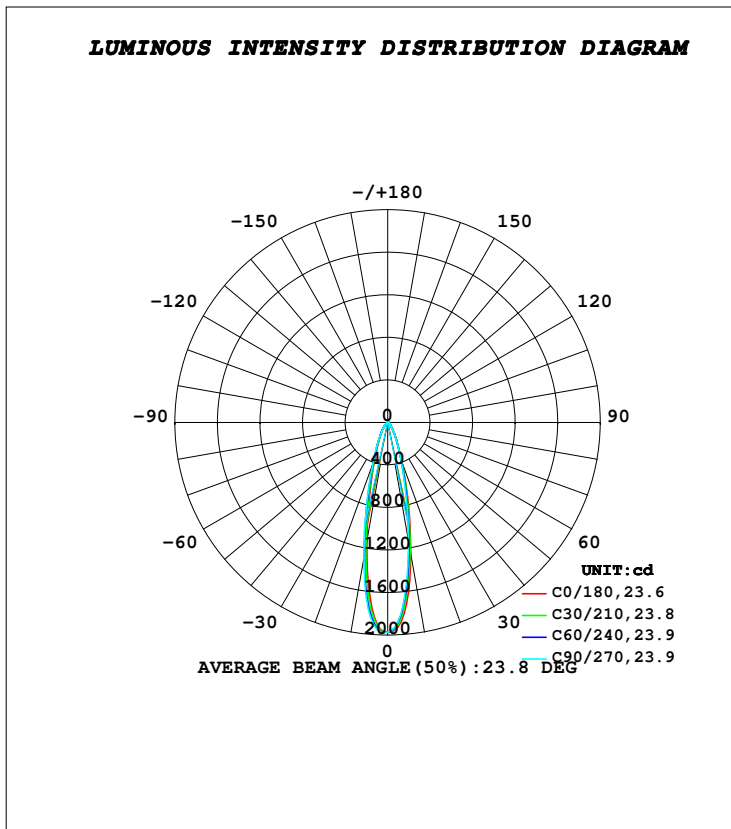


LUMINAIRE PHOTOMETRIC TEST REPORT

Test:U:230.13V I:0.0262A P:5.9606W PF:0.9871 Freq:49.98Hz Lamp Flux:736.02x1 lm		
NAME: TRIOSCAPE - BRACKET	TYPE:FLOOD LIGHTS	WEIGHT:0.470 Kg
SPEC.:4000K, LUMILED, BA-25°, CRI 70	DIM.: 83 x 116 x 110	SERIAL No.:INT/2024/05/88B
MFR.: K-LITE	SUR.:	Shielding Angle:

DATA OF LAMP		PHOTOMETRIC DATA				Eff: 92.74 lm/W
MODEL	KL-7057	I _{max} (cd)	1979	S/MH (C0/180)	0.39	
NOMINAL POWER (W)	6	LOR (%)	75.1	S/MH (C90/270)	0.43	
RATED VOLTAGE (V)	230	TOTAL FLUX (lm)	552.76	η UP, DN (C0-180)	0.0, 36.2	
NOMINAL FLUX (lm)	736.02	CIE CLASS	DIRECT	η UP, DN (C180-360)	0.0, 38.9	
LAMPS INSIDE	1	η up (%)	0.0	CIBSE SHR NOM	0.00	
TEST VOLTAGE (V)	230	η down (%)	75.1	CIBSE SHR MAX	1.00	



C Range: 0 - 360DEG
C Interval: 10.0DEG
Test Speed: HIGH
Temperature: 25.8DEG
Operators: K-LITE
Test Date: 23 July 2024

γ Range: 0 - 90DEG
γ Interval: 1.0DEG
Test System: EVERFINE GO-R5000_V2 SYSTEM V2.00.417
Humidity: 41.9%
Test Distance: 2.001m [K=1.0000]
Remarks:

APPLICABLE ID - KL-7052