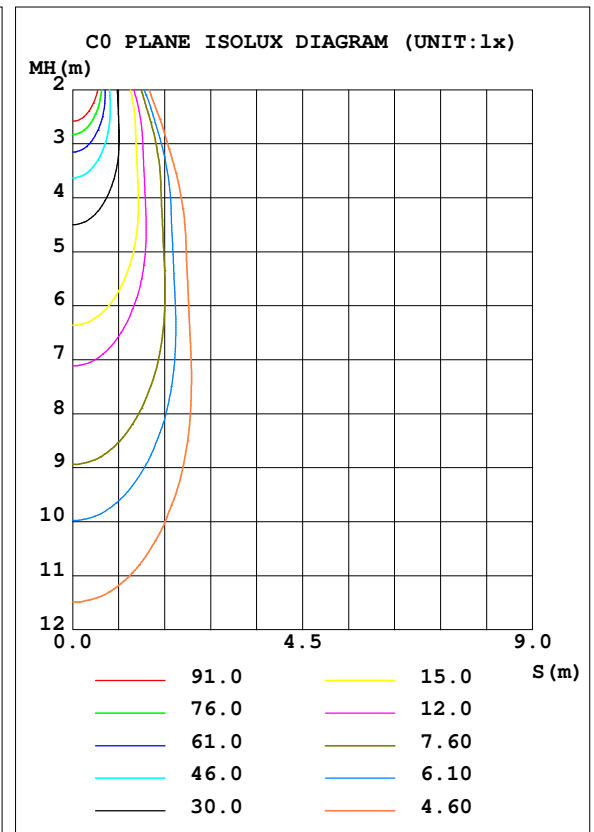
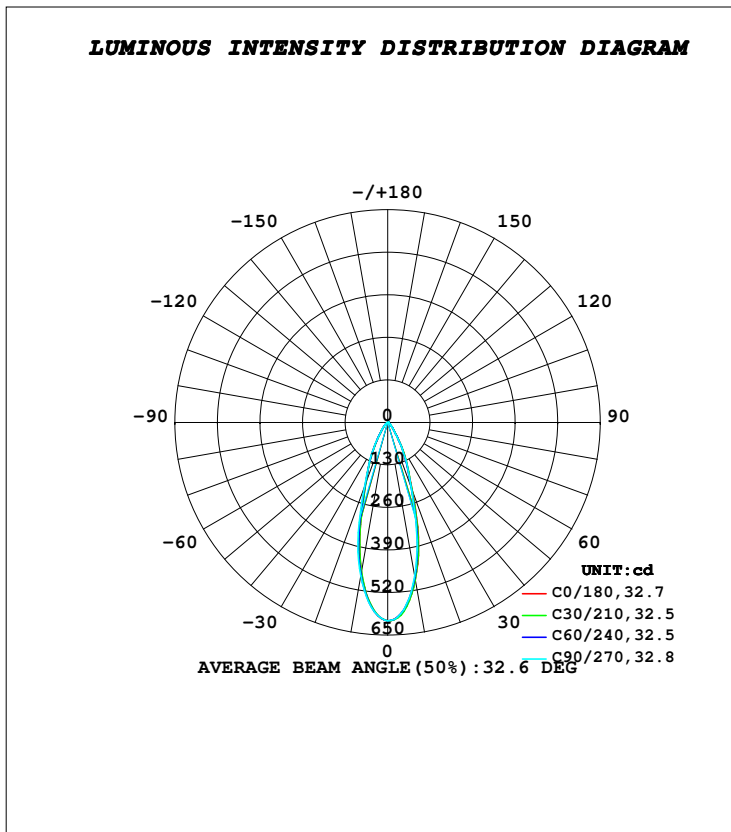


**LUMINAIRE PHOTOMETRIC TEST REPORT**

Test:U:230.16V I:0.0111A P:2.4755W PF:0.9716 Freq:50.00Hz Lamp Flux:338.904x1 lm		
NAME: TRIOSCAPE - BRACKET	TYPE:FLOOD LIGHTS	WEIGHT:0.470 Kg
SPEC.:5700K, LUMILED, BA-40°, CRI 70	DIM.: 83 x 116 x 110	SERIAL No.:INT/2024/05/94C
MFR.: K-LITE	SUR.:	Shielding Angle:

DATA OF LAMP		PHOTOMETRIC DATA Eff: 101.49 lm/W			
MODEL	KL-6988	Imax (cd)	606.7	S/MH (C0/180)	0.52
NOMINAL POWER (W)	3	LOR (%)	74.1	S/MH (C90/270)	0.55
RATED VOLTAGE (V)	230	TOTAL FLUX (lm)	251.24	η UP, DN (C0-180)	0.0, 37.2
NOMINAL FLUX (lm)	338.904	CIE CLASS	DIRECT	η UP, DN (C180-360)	0.0, 36.9
LAMPS INSIDE	1	η up (%)	0.0	CIBSE SHR NOM	0.50
TEST VOLTAGE (V)	230	η down (%)	74.1	CIBSE SHR MAX	0.55



**C Range: 0 - 360DEG**  
**C Interval: 10.0DEG**  
**Test Speed: HIGH**  
**Temperature: 25.3DEG**  
**Operators: K-LITE**  
**Test Date: 29 July 2024**

**γ Range: 0 - 90DEG**  
**γ Interval: 1.0DEG**  
**Test System: EVERFINE GO-R5000\_V2 SYSTEM V2.00.417**  
**Humidity: 40.3%**  
**Test Distance: 2.001m [K=1.0000]**  
**Remarks:**

**APPLICABLE ID - KL-6998**