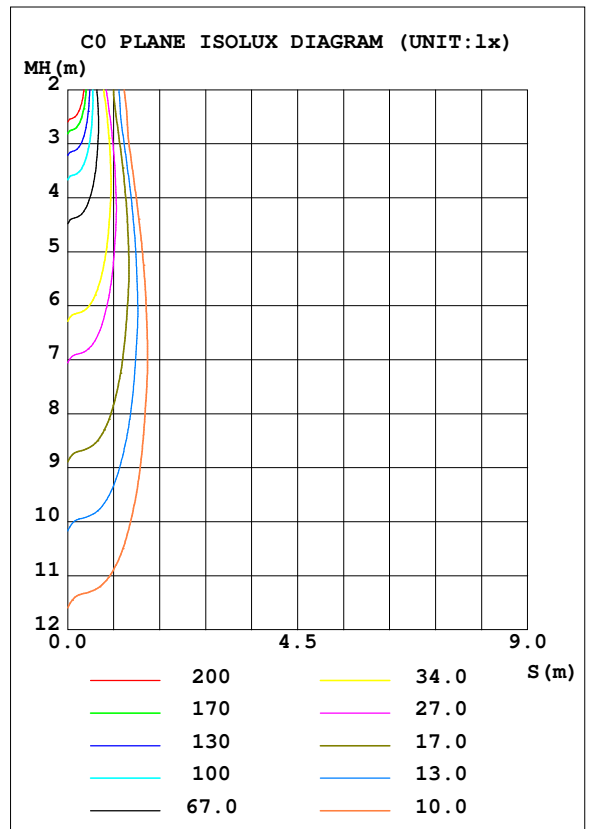
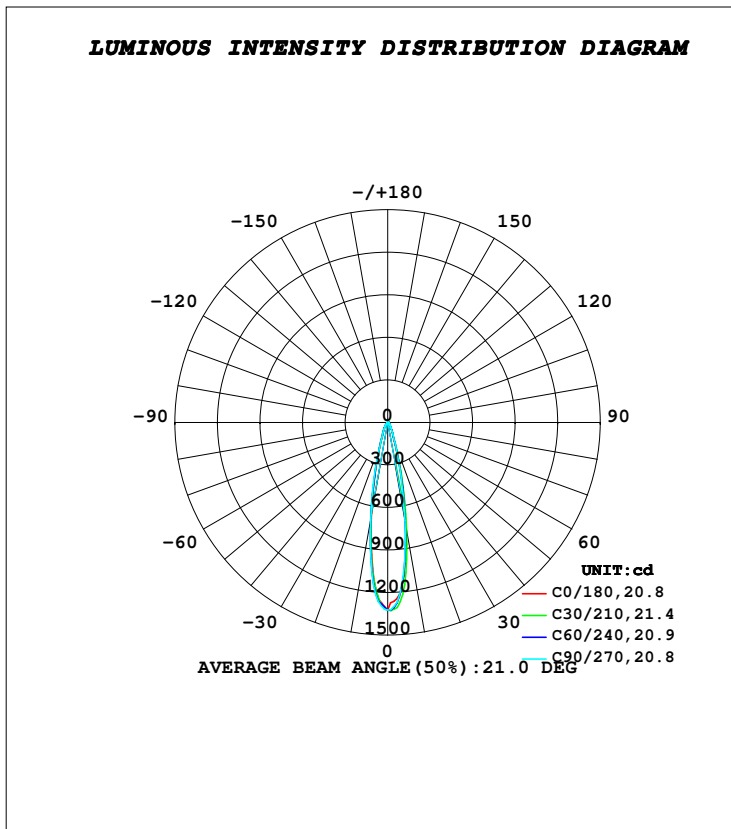


LUMINAIRE PHOTOMETRIC TEST REPORT

Test:U:230.16V I:0.0111A P:2.4851W PF:0.9729 Freq:50.00Hz Lamp Flux:338.904x1 lm		
NAME: TRIOSCAPE - BRACKET	TYPE:FLOOD LIGHTS	WEIGHT:0.470 Kg
SPEC.:5700K, LUMILED, BA-25°, CRI 70	DIM.: 83 x 116 x 110	SERIAL No.:INT/2024/05/94B
MFR.: K-LITE	SUR.:	Shielding Angle:

DATA OF LAMP		PHOTOMETRIC DATA Eff: 106.55 lm/W			
MODEL	KL-6988	I _{max} (cd)	1327	S/MH (C0/180)	0.34
NOMINAL POWER (W)	3	LOR (%)	78.1	S/MH (C90/270)	0.36
RATED VOLTAGE (V)	230	TOTAL FLUX (lm)	264.79	η UP, DN (C0-180)	0.0, 39.3
NOMINAL FLUX (lm)	338.904	CIE CLASS	DIRECT	η UP, DN (C180-360)	0.0, 38.9
LAMPS INSIDE	1	η up (%)	0.0	CIBSE SHR NOM	0.00
TEST VOLTAGE (V)	230	η down (%)	78.1	CIBSE SHR MAX	1.00



C Range: 0 - 360DEG
C Interval: 10.0DEG
Test Speed: HIGH
Temperature: 25.8DEG
Operators: K-LITE
Test Date: 27 July 2024

γ Range: 0 - 90DEG
γ Interval: 1.0DEG
Test System: EVERFINE GO-R5000_V2 SYSTEM V2.00.417
Humidity: 42.8%
Test Distance: 2.001m [K=1.0000]
Remarks:

APPLICABLE ID - KL-6998