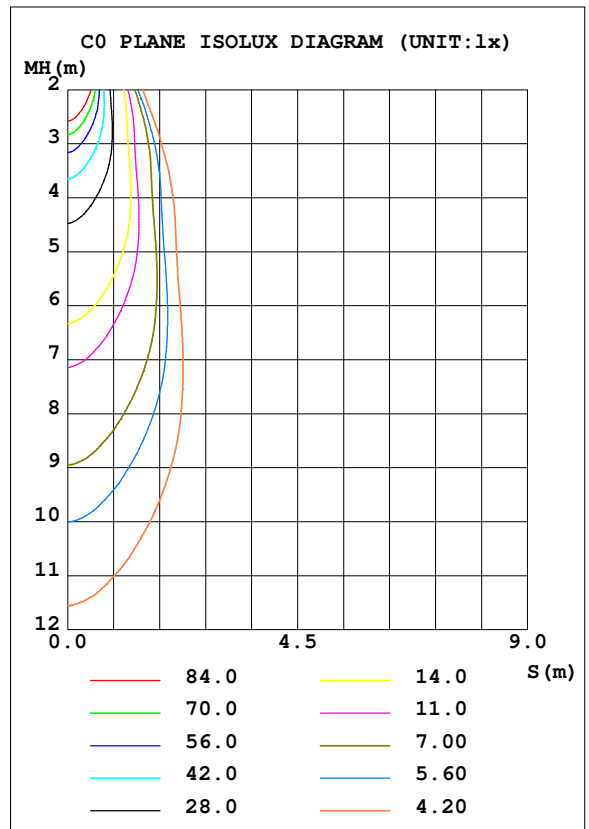
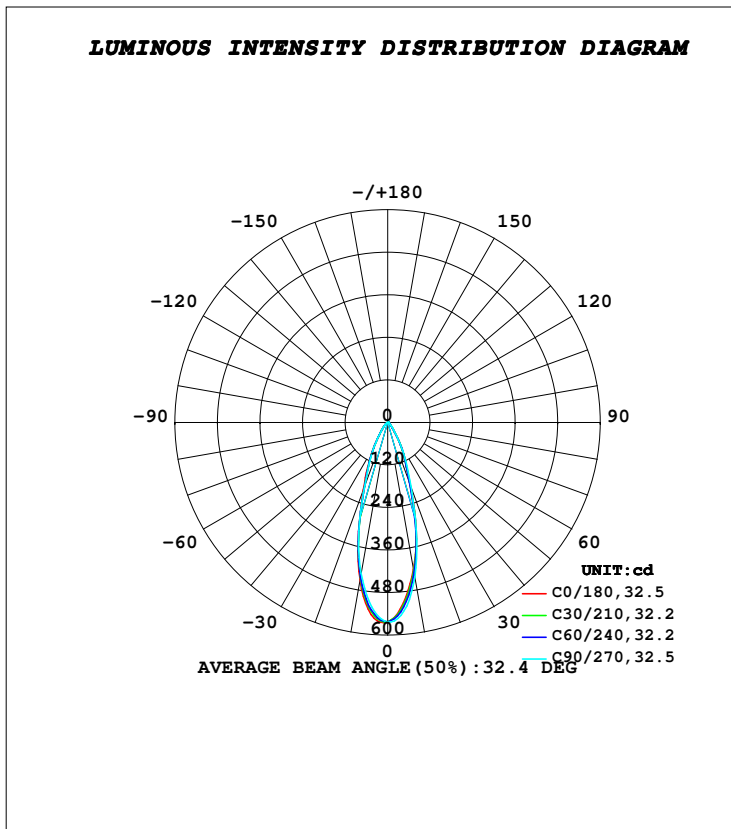


LUMINAIRE PHOTOMETRIC TEST REPORT

Test:U:230.07V I:0.0109A P:2.4372W PF:0.9725 Freq:49.99Hz Lamp Flux:327.888x1 lm		
NAME: TRIOSCAPE - BRACKET	TYPE:FLOOD LIGHTS	WEIGHT:0.470 Kg
SPEC.:4000K, LUMILED, BA-40°, CRI 70	DIM.: 83 x 116 x 110	SERIAL No.:INT/2024/05/93C
MFR.: K-LITE	SUR.:	Shielding Angle:

DATA OF LAMP		PHOTOMETRIC DATA				Eff: 94.28 lm/W
MODEL	KL-6988	Imax (cd)	565.6	S/MH (C0/180)	0.54	
NOMINAL POWER (W)	3	LOR (%)	70.1	S/MH (C90/270)	0.54	
RATED VOLTAGE (V)	230	TOTAL FLUX (lm)	229.77	η UP, DN (C0-180)	0.0, 34.8	
NOMINAL FLUX (lm)	327.888	CIE CLASS	DIRECT	η UP, DN (C180-360)	0.0, 35.3	
LAMPS INSIDE	1	η up (%)	0.0	CIBSE SHR NOM	0.50	
TEST VOLTAGE (V)	230	η down (%)	70.1	CIBSE SHR MAX	0.55	



C Range: 0 - 360DEG
C Interval: 10.0DEG
Test Speed: HIGH
Temperature: 25.6DEG
Operators:K-LITE
Test Date:26 July 2024

γ Range: 0 - 90DEG
γ Interval: 1.0DEG
Test System:EVERFINE GO-R5000_V2 SYSTEM V2.00.417
Humidity: 42.9%
Test Distance:2.001m [K=1.0000]
Remarks:

APPLICABLE ID - KL-6998