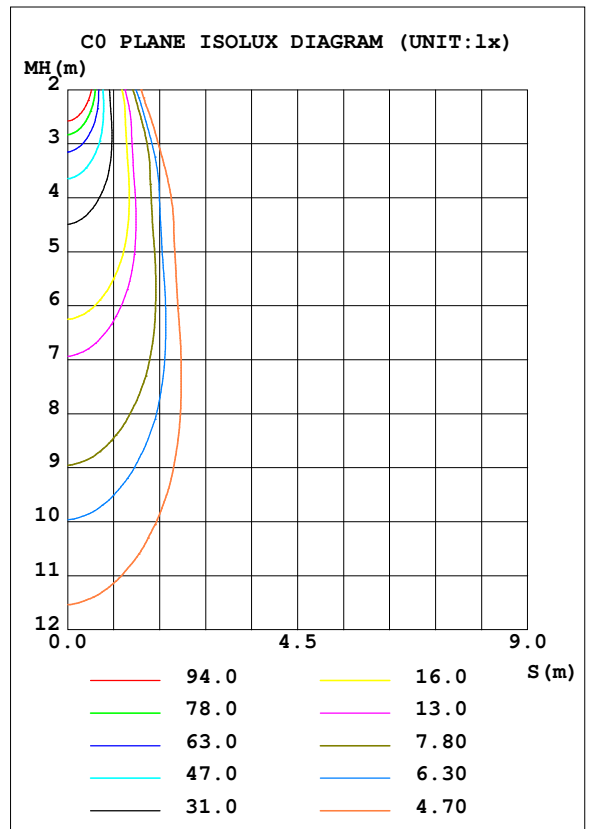
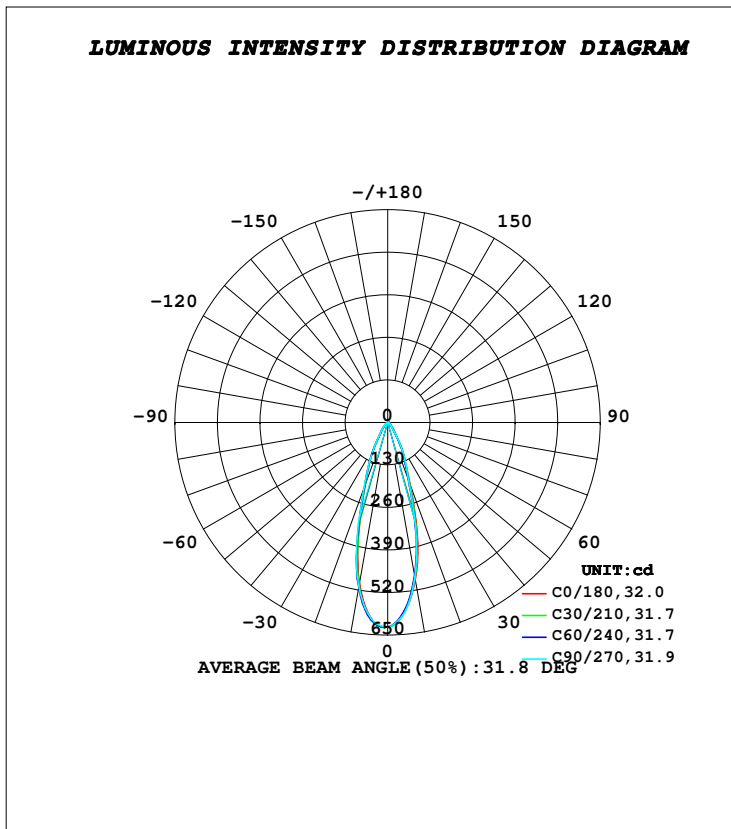


**LUMINAIRE PHOTOMETRIC TEST REPORT**

Test:U:230.15V I:0.0111A P:2.4802W PF:0.9718 Freq:50.00Hz Lamp Flux:330.642x1 lm		
NAME: TRIOSCAPE - BRACKET	TYPE:FLOOD LIGHTS	WEIGHT:0.470 Kg
SPEC.:3000K, LUMILED, BA-40°, CRI 70	DIM.: 83 x 116 x 110	SERIAL No.:INT/2024/05/92C
MFR.: K-LITE	SUR.:	Shielding Angle:

DATA OF LAMP		PHOTOMETRIC DATA				Eff: 99.34 lm/W
MODEL	KL-6988	I <sub>max</sub> (cd)	626.8	S/MH (C0/180)	0.53	
NOMINAL POWER (W)	3	LOR (%)	74.5	S/MH (C90/270)	0.54	
RATED VOLTAGE (V)	230	TOTAL FLUX (lm)	246.39	η UP, DN (C0-180)	0.0, 36.4	
NOMINAL FLUX (lm)	330.642	CIE CLASS	DIRECT	η UP, DN (C180-360)	0.0, 38.1	
LAMPS INSIDE	1	η up (%)	0.0	CIBSE SHR NOM	0.50	
TEST VOLTAGE (V)	230	η down (%)	74.5	CIBSE SHR MAX	0.50	



**C Range: 0 - 360DEG**  
**C Interval: 10.0DEG**  
**Test Speed: HIGH**  
**Temperature: 25.3DEG**  
**Operators: K-LITE**  
**Test Date: 26 July 2024**

**γ Range: 0 - 90DEG**  
**γ Interval: 1.0DEG**  
**Test System: EVERFINE GO-R5000\_V2 SYSTEM V2.00.417**  
**Humidity: 41.5%**  
**Test Distance: 2.001m [K=1.0000]**  
**Remarks:**

**APPLICABLE ID - KL-6998**