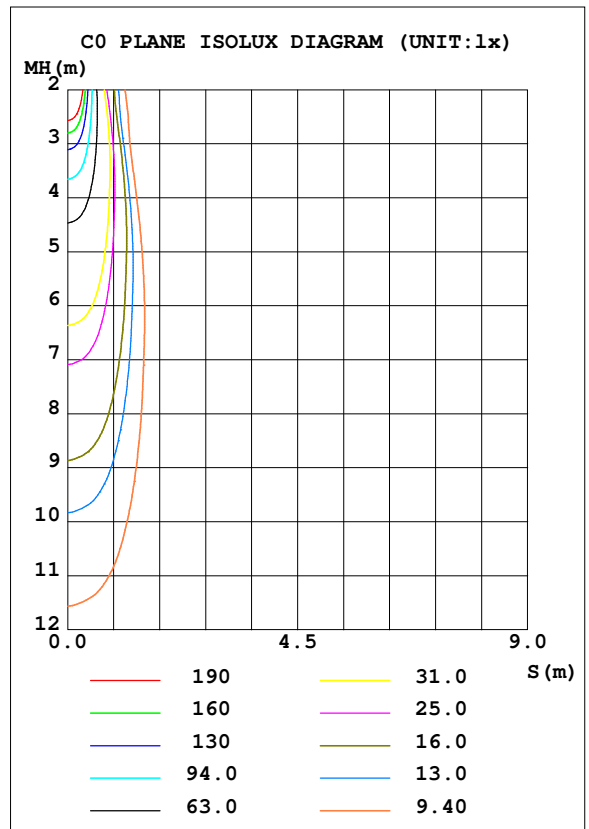
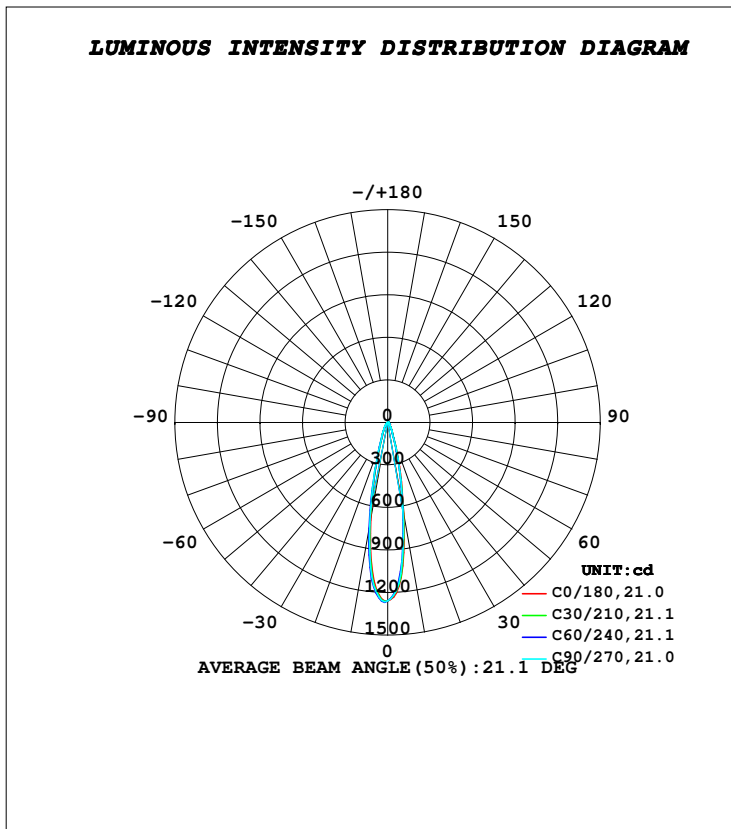


LUMINAIRE PHOTOMETRIC TEST REPORT

| | | |
|--|----------------------|----------------------------|
| Test:U:230.16V I:0.0111A P:2.4732W PF:0.9713 Freq:49.99Hz Lamp Flux:330.642x1 lm | | |
| NAME: TRIOSCAPE - BRACKET | TYPE:FLOOD LIGHTS | WEIGHT:0.470 Kg |
| SPEC.:3000K, LUMILED, BA-25°, CRI 70 | DIM.: 83 x 116 x 110 | SERIAL No.:INT/2024/05/92B |
| MFR.: K-LITE | SUR.: | Shielding Angle: |

| DATA OF LAMP | | PHOTOMETRIC DATA Eff: 104.91 lm/W | | | |
|-------------------|---------|-----------------------------------|--------|---------------------|-----------|
| MODEL | KL-6988 | Imax (cd) | 1269 | S/MH (C0/180) | 0.37 |
| NOMINAL POWER (W) | 3 | LOR (%) | 78.5 | S/MH (C90/270) | 0.38 |
| RATED VOLTAGE (V) | 230 | TOTAL FLUX (lm) | 259.47 | η UP, DN (C0-180) | 0.0, 37.6 |
| NOMINAL FLUX (lm) | 330.642 | CIE CLASS | DIRECT | η UP, DN (C180-360) | 0.0, 40.9 |
| LAMPS INSIDE | 1 | η up (%) | 0.0 | CIBSE SHR NOM | 0.00 |
| TEST VOLTAGE (V) | 230 | η down (%) | 78.5 | CIBSE SHR MAX | 1.00 |



C Range: 0 - 360DEG
C Interval: 10.0DEG
Test Speed: HIGH
Temperature: 25.5DEG
Operators: K-LITE
Test Date: 26 July 2024

γ Range: 0 - 90DEG
γ Interval: 1.0DEG
Test System: EVERFINE GO-R5000_V2 SYSTEM V2.00.417
Humidity: 37.1%
Test Distance: 2.001m [K=1.0000]
Remarks:

APPLICABLE ID - KL-6998