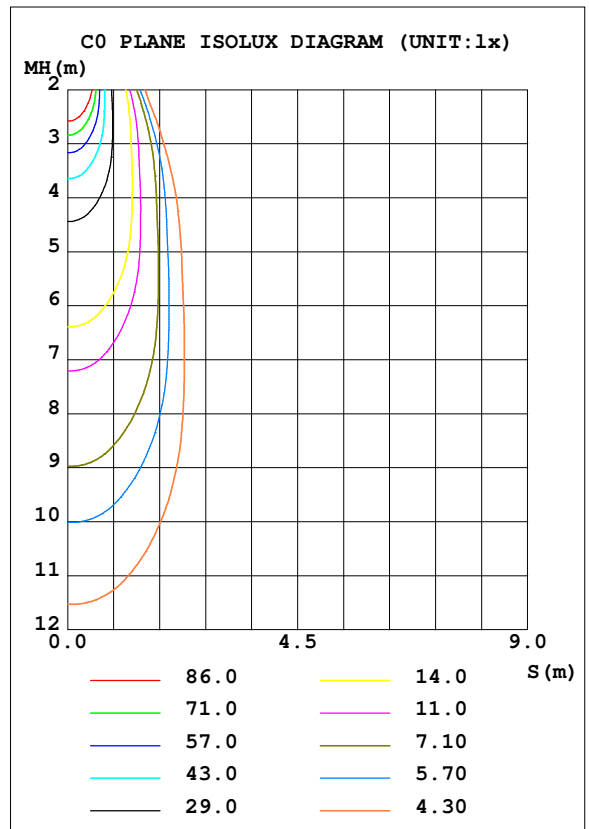
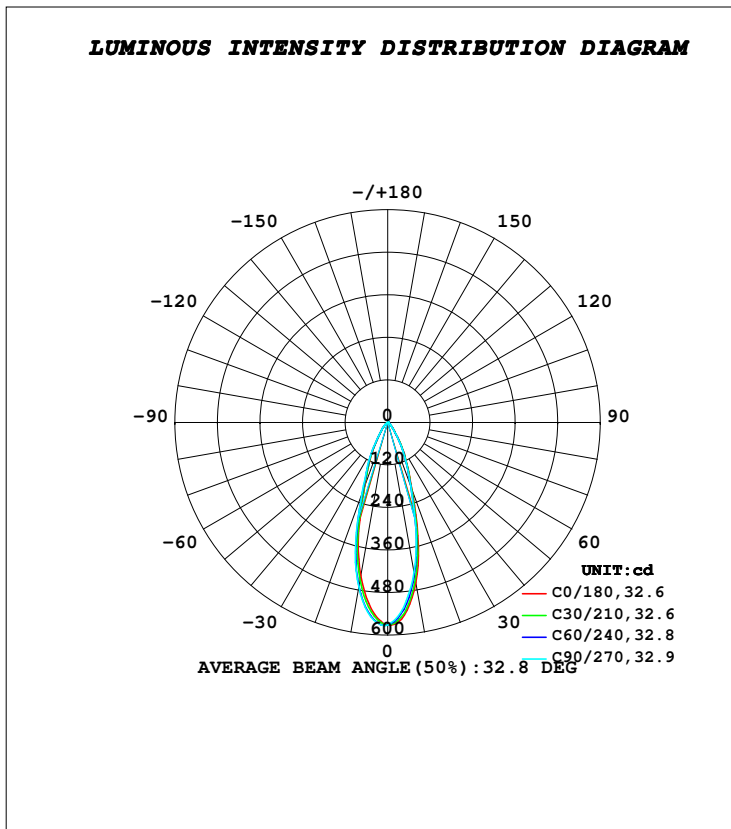


LUMINAIRE PHOTOMETRIC TEST REPORT

Test:U:230.18V I:0.0115A P:2.5726W PF:0.9730 Freq:49.99Hz Lamp Flux:319.14x1 lm		
NAME: TRIOSCAPE - BRACKET	TYPE:FLOOD LIGHTS	WEIGHT:0.470 Kg
SPEC.:2700K, LUMILED, BA-40°, CRI 70	DIM.: 83 x 116 x 110	SERIAL No.:INT/2024/05/91C
MFR.: K-LITE	SUR.:	Shielding Angle:

DATA OF LAMP		PHOTOMETRIC DATA				Eff: 93.04 lm/W
MODEL	KL-6988	I _{max} (cd)	573.9	S/MH (C0/180)	0.54	
NOMINAL POWER (W)	3	LOR (%)	75.0	S/MH (C90/270)	0.57	
RATED VOLTAGE (V)	230	TOTAL FLUX (lm)	239.36	η UP, DN (C0-180)	0.0, 36.5	
NOMINAL FLUX (lm)	319.14	CIE CLASS	DIRECT	η UP, DN (C180-360)	0.0, 38.5	
LAMPS INSIDE	1	η up (%)	0.0	CIBSE SHR NOM	0.50	
TEST VOLTAGE (V)	230	η down (%)	75.0	CIBSE SHR MAX	0.55	



C Range: 0 - 360DEG
 C Interval: 10.0DEG
 Test Speed: HIGH
 Temperature: 25.8DEG
 Operators:K-LITE
 Test Date:25 July 2024

γ Range: 0 - 90DEG
 γ Interval: 1.0DEG
 Test System:EVERFINE GO-R5000_V2 SYSTEM V2.00.417
 Humidity: 42.6%
 Test Distance:2.001m [K=1.0000]
 Remarks:

APPLICABLE ID - KL-6998