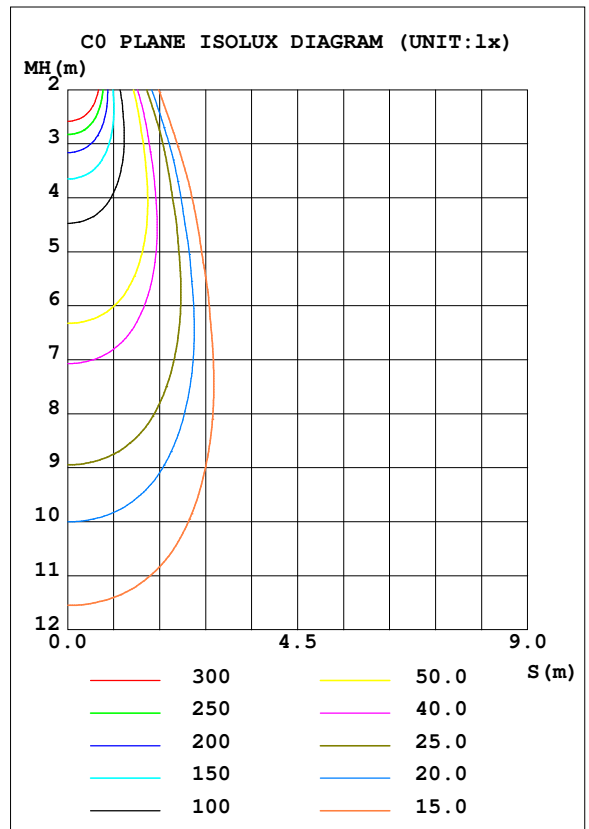
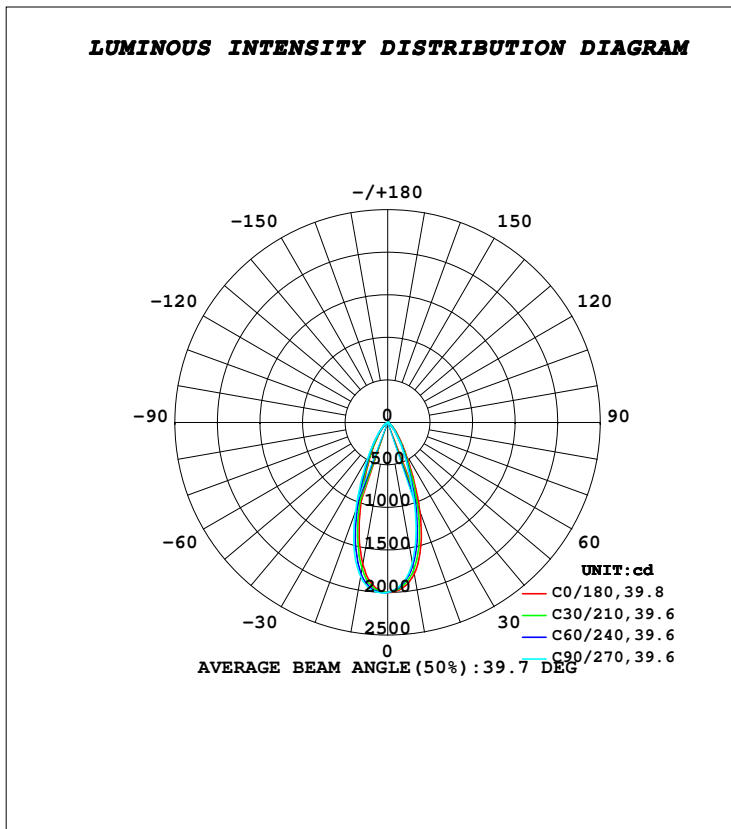


LUMINAIRE PHOTOMETRIC TEST REPORT

Test:U:230.55V I:0.0567A P:12.948W PF:0.9902 Freq:49.99Hz Lamp Flux:1466.15x1 lm		
NAME: NEBULA MIDI - BRACKET	TYPE:FLOOD LIGHTS	WEIGHT:0.700 Kg
SPEC.:2700K, CITI 1, BA-40°, 90 CRI	DIM.: 113 x 84 x 117	SERIAL No.:INT/2024/05/71C
MFR.: K-LITE	SUR.:	Shielding Angle:

DATA OF LAMP		PHOTOMETRIC DATA				Eff: 86.62 lm/W
MODEL	KL-4268	I _{max} (cd)	2004	S/MH (C0/180)	0.61	
NOMINAL POWER (W)	12	LOR (%)	76.5	S/MH (C90/270)	0.68	
RATED VOLTAGE (V)	230	TOTAL FLUX (lm)	1121.5	η UP, DN (C0-180)	0.0, 35.8	
NOMINAL FLUX (lm)	1466.15	CIE CLASS	DIRECT	η UP, DN (C180-360)	0.0, 40.7	
LAMPS INSIDE	1	η up (%)	0.0	CIBSE SHR NOM	0.50	
TEST VOLTAGE (V)	230	η down (%)	76.5	CIBSE SHR MAX	0.65	



C Range: 0 - 360DEG
C Interval: 10.0DEG
Test Speed: HIGH
Temperature: 25.3DEG
Operators: K-LITE
Test Date: 10 June 2024

γ Range: 0 - 90DEG
γ Interval: 1.0DEG
Test System: EVERFINE GO-R5000_V2 SYSTEM V2.00.417
Humidity: 37.8%
Test Distance: 1.997m [K=1.0000]
Remarks:
APPLICABLE ID : KL-4267