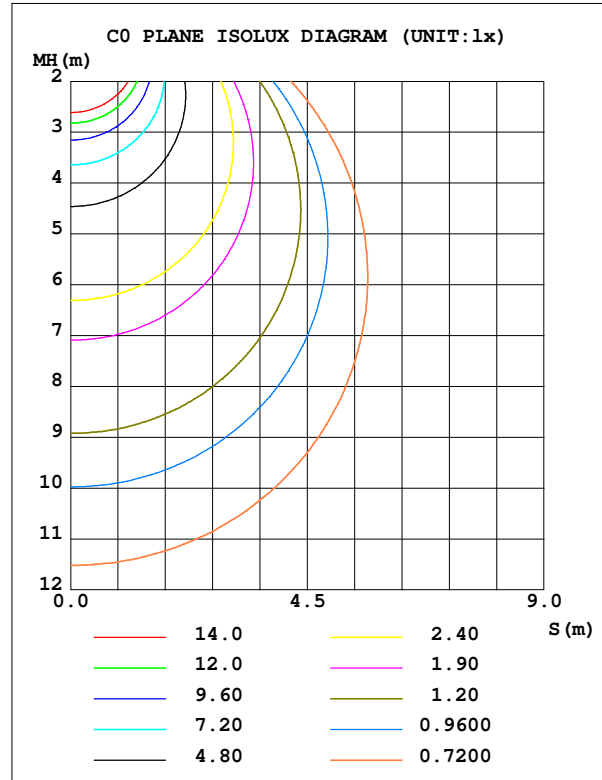
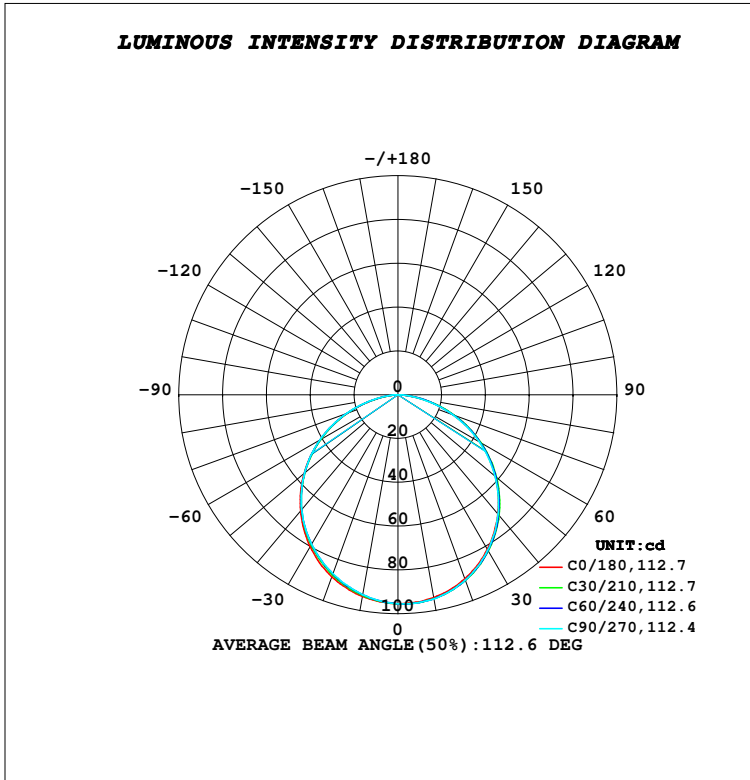


LUMINAIRE PHOTOMETRIC TEST REPORT

Test:U:230.17V I:0.0289A P:6.5373W PF:0.9821 Freq:50.00Hz Lamp Flux:1746.26x1 lm		
NAME: SUDO-OPEN FRAME	TYPE:PATH FINDERS	WEIGHT:0.705kg
SPEC.:5700K, NICHIA, CRI 70	DIM.: 255 x 87 x 76	SERIAL No.:INT/2023/11/149
MFR.: K-LITE	SUR.:	Shielding Angle:

DATA OF LAMP		PHOTOMETRIC DATA				Eff: 41.49 lm/W
MODEL	KL-2753	I _{max} (cd)	95.73	S/MH (C0/180)		1.25
NOMINAL POWER (W)	6	LOR (%)	15.5	S/MH (C90/270)		1.24
RATED VOLTAGE (V)	230	TOTAL FLUX (lm)	271.24	η UP, DN (C0-180)		0.0, 7.9
NOMINAL FLUX (lm)	1746.26	CIE CLASS	DIRECT	η UP, DN (C180-360)		0.0, 7.6
LAMPS INSIDE	1	η up (%)	0.0	CIBSE SHR NOM		1.25
TEST VOLTAGE (V)	230	η down (%)	15.5	CIBSE SHR MAX		1.35



C Range: 0 - 360DEG
 C Interval: 10.0DEG
 Test Speed: HIGH
 Temperature: 25.2DEG
 Operators:K-LITE
 Test Date:17 November 2023

γ Range: 0 - 90DEG
 γ Interval: 1.0DEG
 Test System:EVERFINE GO-R5000_V2 SYSTEM V2.00.417
 Humidity: 46.2%
 Test Distance:1.935m [K=1.0000]
 Remarks: