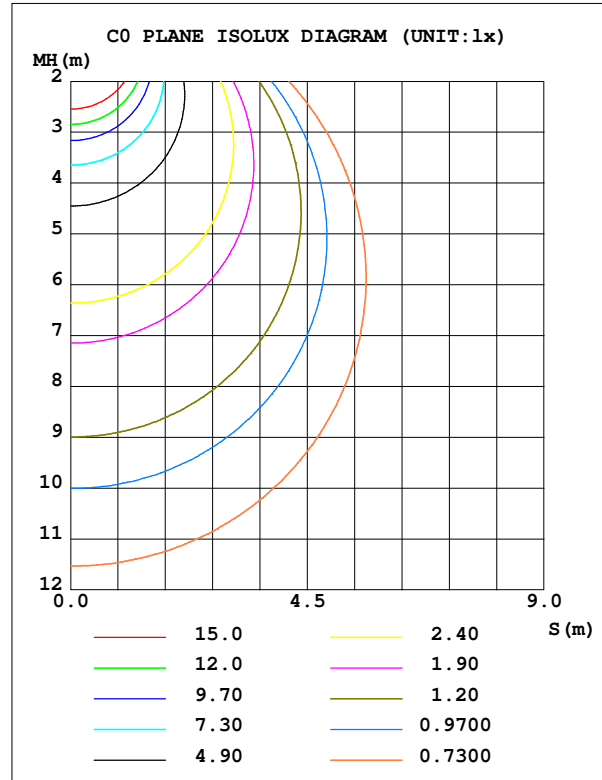
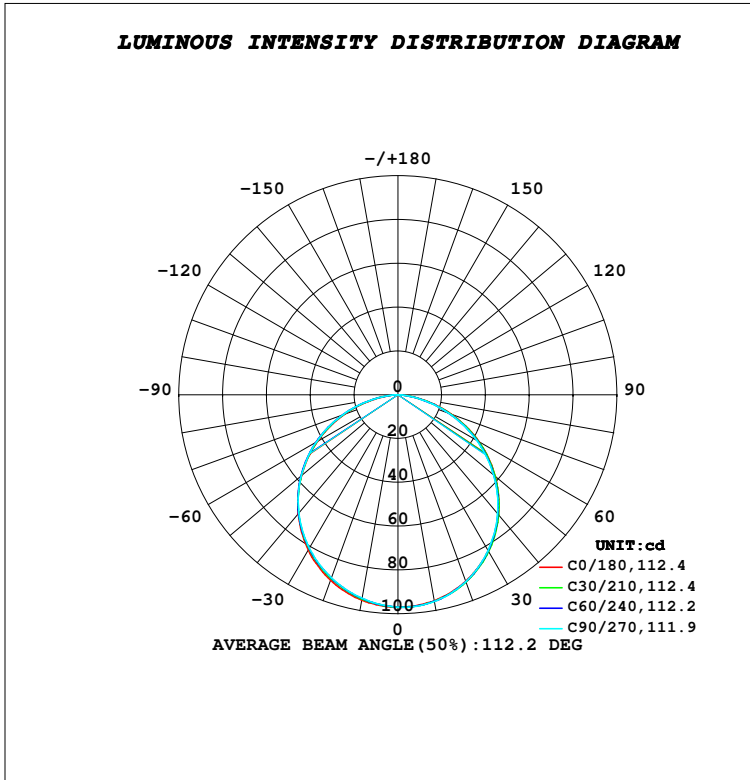


LUMINAIRE PHOTOMETRIC TEST REPORT

Test:U:230.13V I:0.0290A P:6.5524W PF:0.9822 Freq:50.00Hz Lamp Flux:993.984x1 lm		
NAME: SUDO-OPEN FRAME	TYPE:PATH FINDERS	WEIGHT:0.705kg
SPEC.:4000K, NICHIA, CRI 80	DIM.: 255 x 87 x 76	SERIAL No.:INT/2023/11/44
MFR.: K-LITE	SUR.:	Shielding Angle:

DATA OF LAMP		PHOTOMETRIC DATA				Eff: 41.78 lm/W
MODEL	KL-2753	I _{max} (cd)	97.14	S/MH (C0/180)		1.26
NOMINAL POWER (W)	6	LOR (%)	27.5	S/MH (C90/270)		1.24
RATED VOLTAGE (V)	230	TOTAL FLUX (lm)	273.74	η UP, DN (C0-180)		0.0, 13.7
NOMINAL FLUX (lm)	993.984	CIE CLASS	DIRECT	η UP, DN (C180-360)		0.0, 13.8
LAMPS INSIDE	1	η up (%)	0.0	CIBSE SHR NOM		1.25
TEST VOLTAGE (V)	230	η down (%)	27.5	CIBSE SHR MAX		1.35



C Range: 0 - 360DEG
 C Interval: 10.0DEG
 Test Speed: HIGH
 Temperature: 24.0DEG
 Operators:K-LITE
 Test Date:11 November 2023

γ Range: 0 - 90DEG
 γ Interval: 1.0DEG
 Test System:EVERFINE GO-R5000_V2 SYSTEM V2.00.417
 Humidity: 40.9%
 Test Distance:1.935m [K=1.0000]
 Remarks: