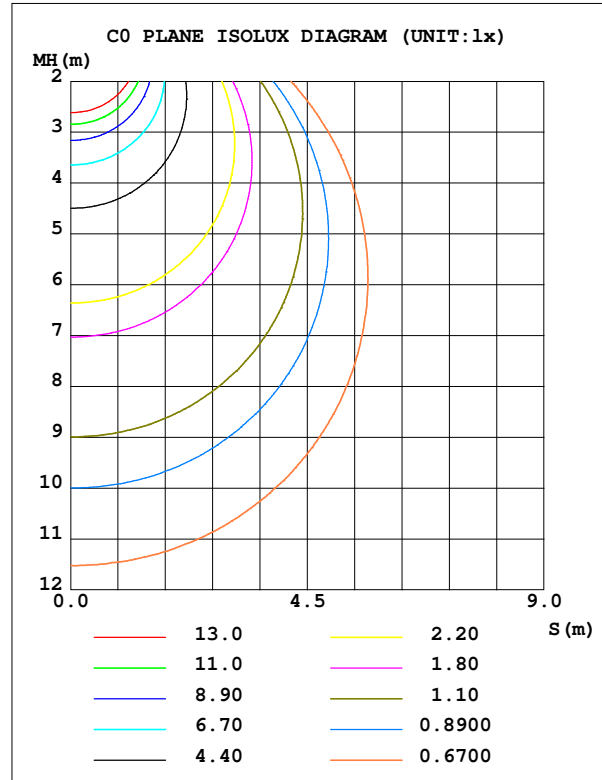
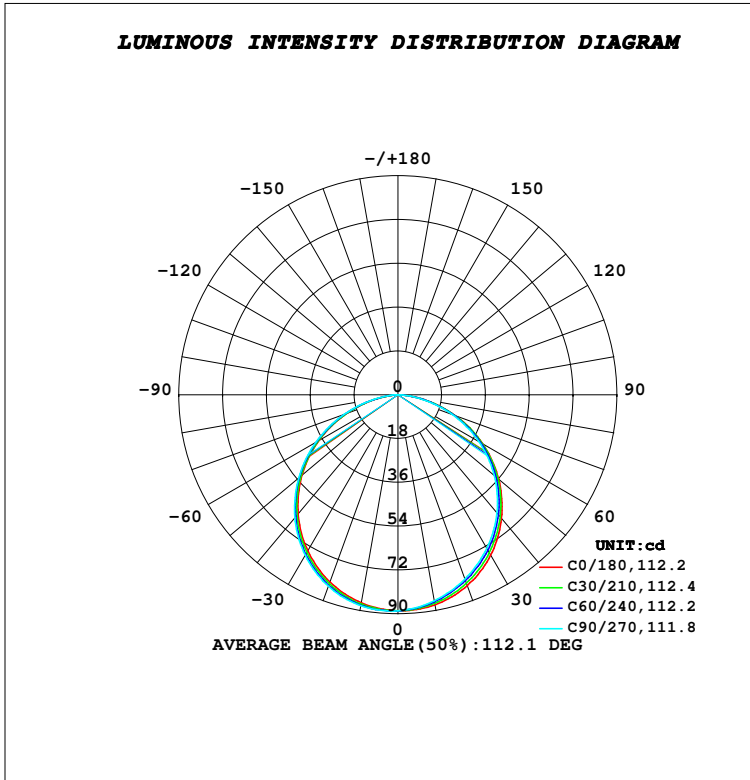


**LUMINAIRE PHOTOMETRIC TEST REPORT**

Test:U:230.15V I:0.0290A P:6.5574W PF:0.9825 Freq:50.00Hz Lamp Flux:979.392x1 lm		
NAME: SUDO-OPEN FRAME	TYPE:PATH FINDERS	WEIGHT:0.705kg
SPEC.:2700K, NICHIA, CRI 80	DIM.: 255 x 87 x 76	SERIAL No.:INT/2023/11/15
MFR.: K-LITE	SUR.:	Shielding Angle:

DATA OF LAMP		PHOTOMETRIC DATA				Eff: 38.21 lm/W
MODEL	KL-2753	I <sub>max</sub> (cd)	89.04	S/MH (C0/180)		1.24
NOMINAL POWER (W)	6	LOR (%)	25.6	S/MH (C90/270)		1.27
RATED VOLTAGE (V)	230	TOTAL FLUX (lm)	250.57	η UP, DN (C0-180)		0.0, 12.7
NOMINAL FLUX (lm)	979.392	CIE CLASS	DIRECT	η UP, DN (C180-360)		0.0, 12.9
LAMPS INSIDE	1	η up (%)	0.0	CIBSE SHR NOM		1.25
TEST VOLTAGE (V)	230	η down (%)	25.6	CIBSE SHR MAX		1.35



C Range: 0 - 360DEG  
 C Interval: 10.0DEG  
 Test Speed: HIGH  
 Temperature: 25.1DEG  
 Operators:K-LITE  
 Test Date:07 November 2023

γ Range: 0 - 90DEG  
 γ Interval: 1.0DEG  
 Test System:EVERFINE GO-R5000\_V2 SYSTEM V2.00.417  
 Humidity: 38.7%  
 Test Distance:1.935m [K=1.0000]  
 Remarks: