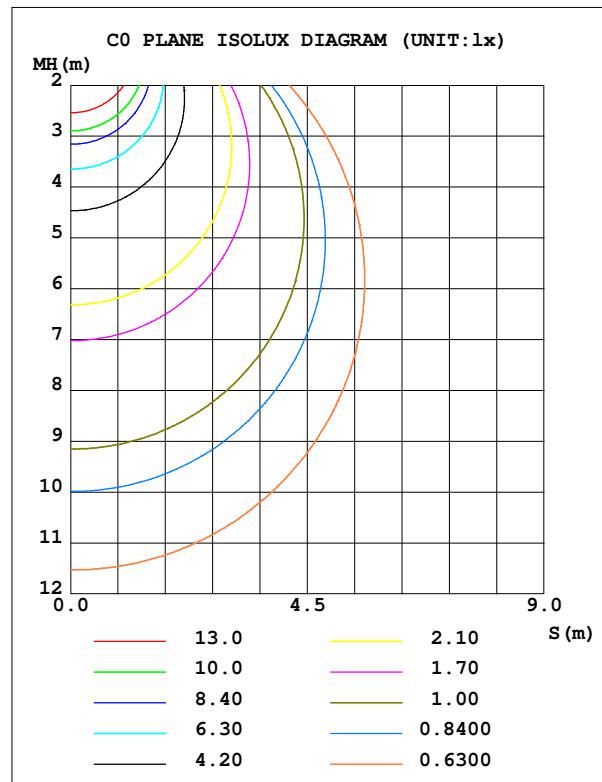
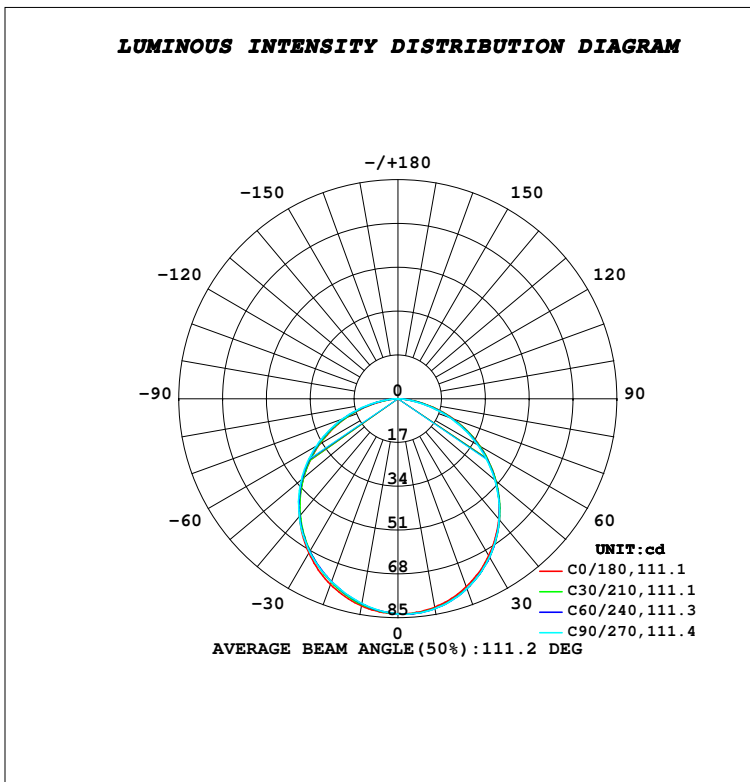


**LUMINAIRE PHOTOMETRIC TEST REPORT**

Test:U:230.13V I:0.0285A P:6.4245W PF:0.9805 Freq:49.99Hz Lamp Flux:983.04x1 lm		
NAME: SUDO MINI-OPEN FRAME	TYPE:PATH FINDERS	WEIGHT:0.435kg
SPEC.:4000K, NICHIA, CRI 80	DIM.: 130 x 87 x 76	SERIAL No.:INT/2023/11/36
MFR.: K-LITE	SUR.:	Shielding Angle:

DATA OF LAMP		PHOTOMETRIC DATA				Eff: 36.29 lm/W
MODEL	KL-2745	I <sub>max</sub> (cd)	83.74	S/MH (C0/180)		1.24
NOMINAL POWER (W)	6	LOR (%)	23.7	S/MH (C90/270)		1.23
RATED VOLTAGE (V)	230	TOTAL FLUX (lm)	233.17	η UP, DN (C0-180)		0.0, 11.9
NOMINAL FLUX (lm)	983.04	CIE CLASS	DIRECT	η UP, DN (C180-360)		0.0, 11.8
LAMPS INSIDE	1	η up (%)	0.0	CIBSE SHR NOM		1.25
TEST VOLTAGE (V)	230	η down (%)	23.7	CIBSE SHR MAX		1.35



C Range: 0 - 360DEG  
 C Interval: 10.0DEG  
 Test Speed: HIGH  
 Temperature: 24.6DEG  
 Operators:K-LITE  
 Test Date:10 November 2023

γ Range: 0 - 90DEG  
 γ Interval: 1.0DEG  
 Test System:EVERFINE GO-R5000\_V2 SYSTEM V2.00.417  
 Humidity: 42.5%  
 Test Distance:1.935m [K=1.0000]  
 Remarks: