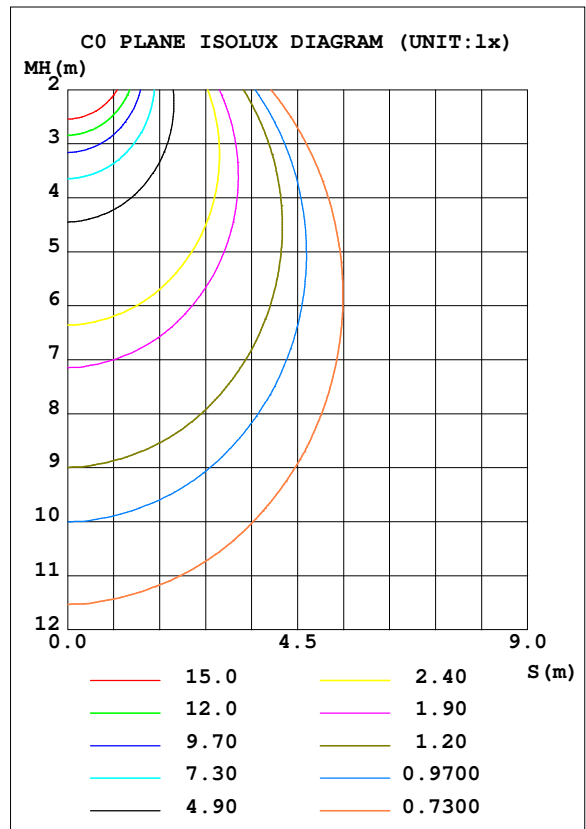
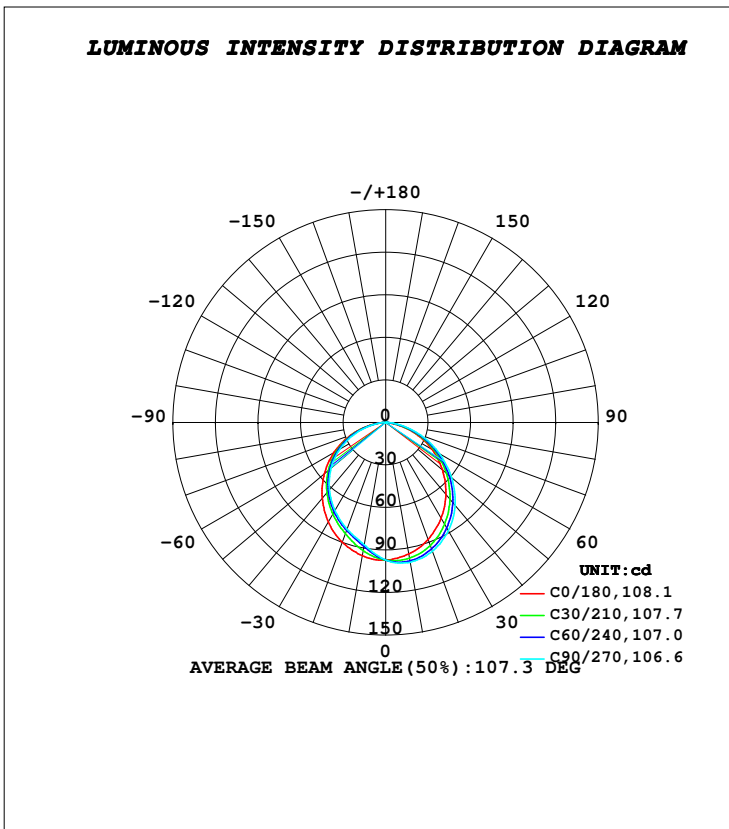


**LUMINAIRE PHOTOMETRIC TEST REPORT**

Test:U:230.15V I:0.0279A P:6.2926W PF:0.9803 Freq:49.99Hz Lamp Flux:864.108x1 lm		
NAME: SUDO MINI - OPEN FRAME	TYPE:PATH FINDERS	WEIGHT:0.430kg
SPEC.:3000K, NICHIA, CRI 80	DIM.: 130 x 87 x 76	SERIAL No.:INT/2024/07/101
MFR.: K-LITE	SUR.:	Shielding Angle:

DATA OF LAMP		PHOTOMETRIC DATA				Eff: 41.78 lm/W
MODEL	KL-2745	I <sub>max</sub> (cd)	100.1	S/MH (C0/180)	1.24	
NOMINAL POWER (W)	6	LOR (%)	30.4	S/MH (C90/270)	1.11	
RATED VOLTAGE (V)	230	TOTAL FLUX (lm)	262.88	η UP, DN (C0-180)	0.0, 16.1	
NOMINAL FLUX (lm)	864.108	CIE CLASS	DIRECT	η UP, DN (C180-360)	0.0, 14.3	
LAMPS INSIDE	1	η up (%)	0.0	CIBSE SHR NOM	1.25	
TEST VOLTAGE (V)	230	η down (%)	30.4	CIBSE SHR MAX	1.35	



**C Range: 0 - 360DEG**  
**C Interval: 10.0DEG**  
**Test Speed: HIGH**  
**Temperature: 25.7DEG**  
**Operators: K-LITE**  
**Test Date: 05 August 2024**

**γ Range: 0 - 180DEG**  
**γ Interval: 1.0DEG**  
**Test System: EVERFINE GO-R5000\_V2 SYSTEM V2.00.417**  
**Humidity: 44.2%**  
**Test Distance: 2.001m [K=1.0000]**  
**Remarks:**