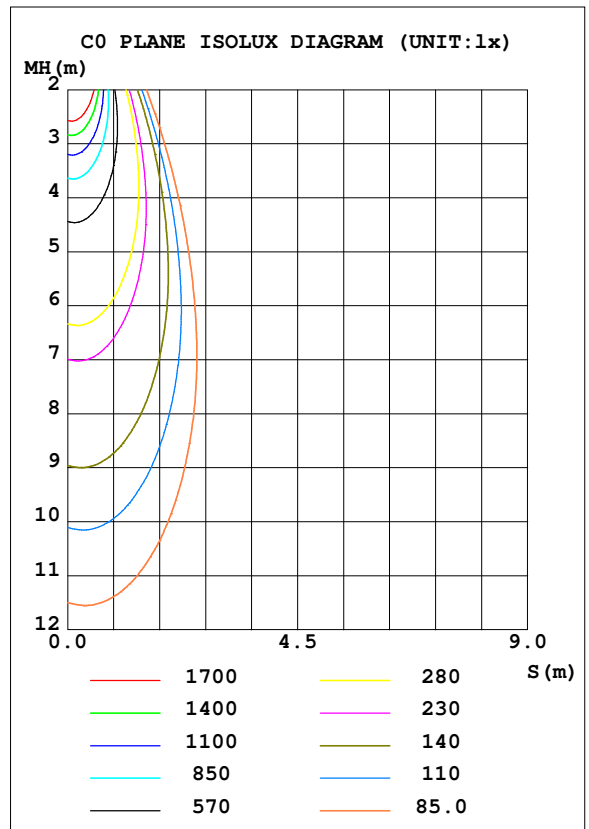
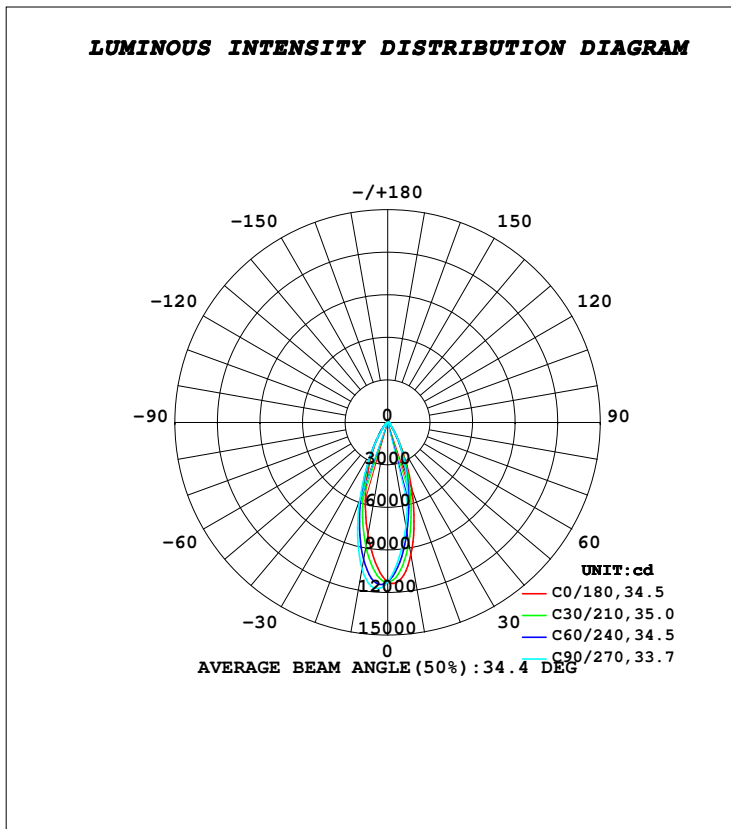


LUMINAIRE PHOTOMETRIC TEST REPORT

Test:U:230.41V I:0.2069A P:47.288W PF:0.9919 Freq:49.98Hz Lamp Flux:6932.89x1 lm		
NAME: VELA 2.0	TYPE: RECESSED CEILING	WEIGHT: 1.670kg
SPEC.: 4000K, NICHIA, BA-45°, 80 CRI	DIM.: Ø185 x 90	SERIAL No.: INT/2024/06/23C
MFR.: K-LITE	SUR.:	Shielding Angle:

DATA OF LAMP		PHOTOMETRIC DATA			
MODEL	KL-4329	Imax (cd)	11861	S/MH (C0/180)	0.53
NOMINAL POWER (W)	50	LOR (%)	77.6	S/MH (C90/270)	0.65
RATED VOLTAGE (V)	230	TOTAL FLUX (lm)	5376.6	η UP, DN (C0-180)	0.0, 35.2
NOMINAL FLUX (lm)	6932.89	CIE CLASS	DIRECT	η UP, DN (C180-360)	0.0, 42.4
LAMPS INSIDE	1	η up (%)	0.0	CIBSE SHR NOM	0.50
TEST VOLTAGE (V)	230	η down (%)	77.6	CIBSE SHR MAX	0.60



C Range: 0 - 360DEG
C Interval: 10.0DEG
Test Speed: HIGH
Temperature: 24.9DEG
Operators: K-LITE
Test Date: 14 June 2024

γ Range: 0 - 90DEG
γ Interval: 1.0DEG
Test System: EVERFINE GO-R5000_V2 SYSTEM V2.00.417
Humidity: 38.7%
Test Distance: 1.997m [K=1.0000]
Remarks: