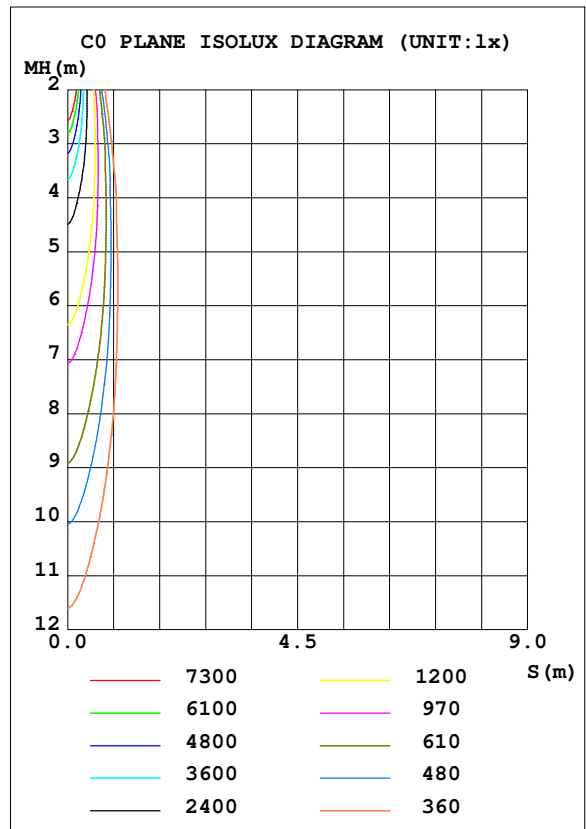
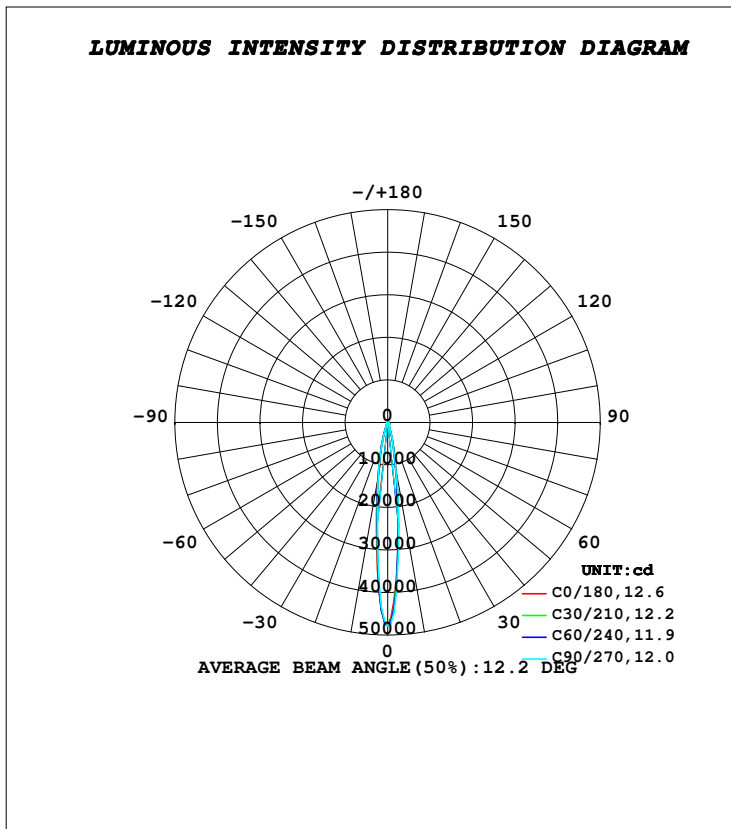


LUMINAIRE PHOTOMETRIC TEST REPORT

Test:U:230.45V I:0.2050A P:46.855W PF:0.9918 Freq:49.99Hz Lamp Flux:6547.96x1 lm		
NAME: VELA 2.0	TYPE:RECESSED CEILING	WEIGHT:1.670kg
SPEC.:2700K, NICHIA, BA-10°, 80 CRI	DIM.: Ø185 x 90	SERIAL No.:INT/2024/06/21A
MFR.: K-LITE	SUR.:	Shielding Angle:

DATA OF LAMP		PHOTOMETRIC DATA Eff: 102.82 lm/W			
MODEL	KL-4329	I _{max} (cd)	47877	S/MH (C0/180)	0.22
NOMINAL POWER (W)	50	LOR (%)	73.6	S/MH (C90/270)	0.20
RATED VOLTAGE (V)	230	TOTAL FLUX (lm)	4817.4	η UP, DN (C0-180)	0.0, 35.9
NOMINAL FLUX (lm)	6547.96	CIE CLASS	DIRECT	η UP, DN (C180-360)	0.0, 37.7
LAMPS INSIDE	1	η up (%)	0.0	CIBSE SHR NOM	0.00
TEST VOLTAGE (V)	230	η down (%)	73.6	CIBSE SHR MAX	1.00



C Range: 0 - 360DEG
C Interval: 10.0DEG
Test Speed: HIGH
Temperature: 25.6DEG
Operators: K-LITE
Test Date: 13 June 2024

γ Range: 0 - 90DEG
γ Interval: 1.0DEG
Test System: EVERFINE GO-R5000_V2 SYSTEM V2.00.417
Humidity: 35.7%
Test Distance: 1.997m [K=1.0000]
Remarks: