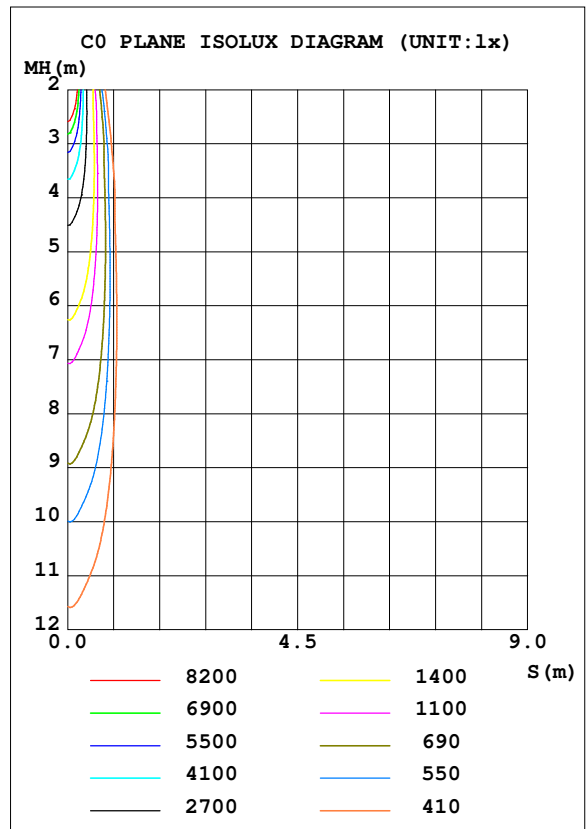
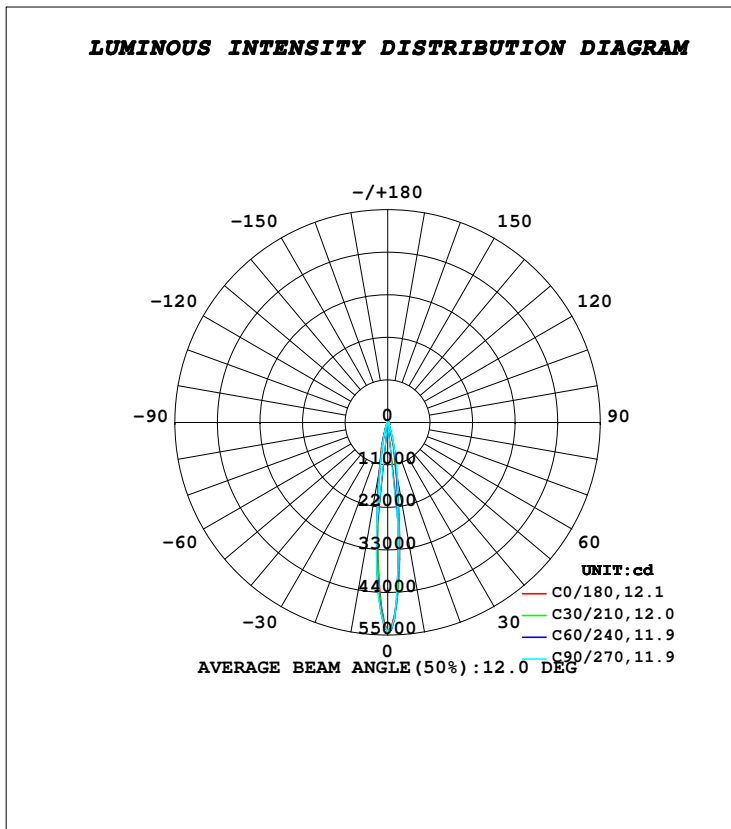


LUMINAIRE PHOTOMETRIC TEST REPORT

Test:U:230.46V I:0.2058A P:47.045W PF:0.9918 Freq:49.99Hz Lamp Flux:6644.19x1 lm		
NAME: VELA 2.0	TYPE:RECESSED CEILING	WEIGHT:1.670kg
SPEC.:3000K, NICHIA, BA-10°, 80 CRI	DIM.: Ø185 x 90	SERIAL No.:INT/2024/06/22A
MFR.: K-LITE	SUR.:	Shielding Angle:

DATA OF LAMP		PHOTOMETRIC DATA Eff: 109.04 lm/W			
MODEL	KL-4329	I _{max} (cd)	54022	S/MH (C0/180)	0.20
NOMINAL POWER (W)	50	LOR (%)	77.2	S/MH (C90/270)	0.21
RATED VOLTAGE (V)	230	TOTAL FLUX (lm)	5129.7	η UP, DN (C0-180)	0.0, 40.0
NOMINAL FLUX (lm)	6644.19	CIE CLASS	DIRECT	η UP, DN (C180-360)	0.0, 37.2
LAMPS INSIDE	1	η up (%)	0.0	CIBSE SHR NOM	0.00
TEST VOLTAGE (V)	230	η down (%)	77.2	CIBSE SHR MAX	1.00



C Range: 0 - 360DEG
C Interval: 10.0DEG
Test Speed: HIGH
Temperature: 25.7DEG
Operators: K-LITE
Test Date: 13 June 2024

γ Range: 0 - 90DEG
γ Interval: 1.0DEG
Test System: EVERFINE GO-R5000_V2 SYSTEM V2.00.417
Humidity: 35.0%
Test Distance: 1.997m [K=1.0000]
Remarks: