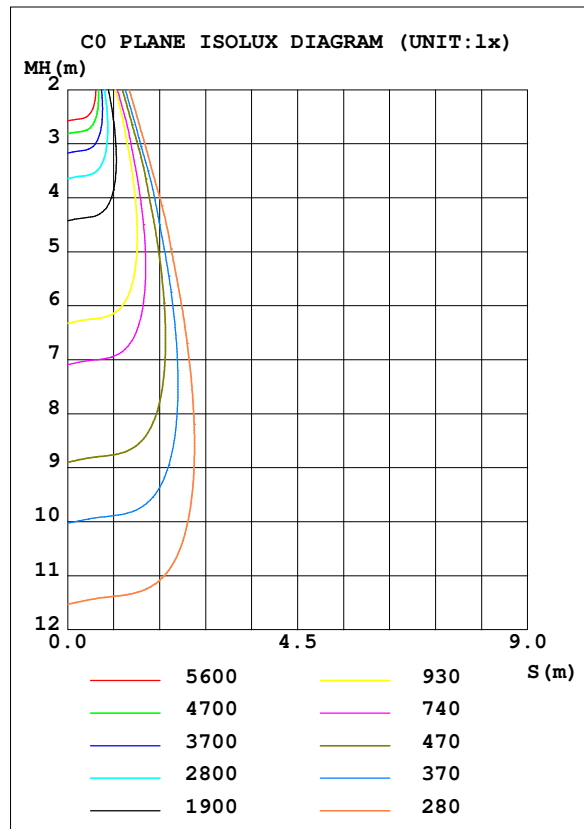
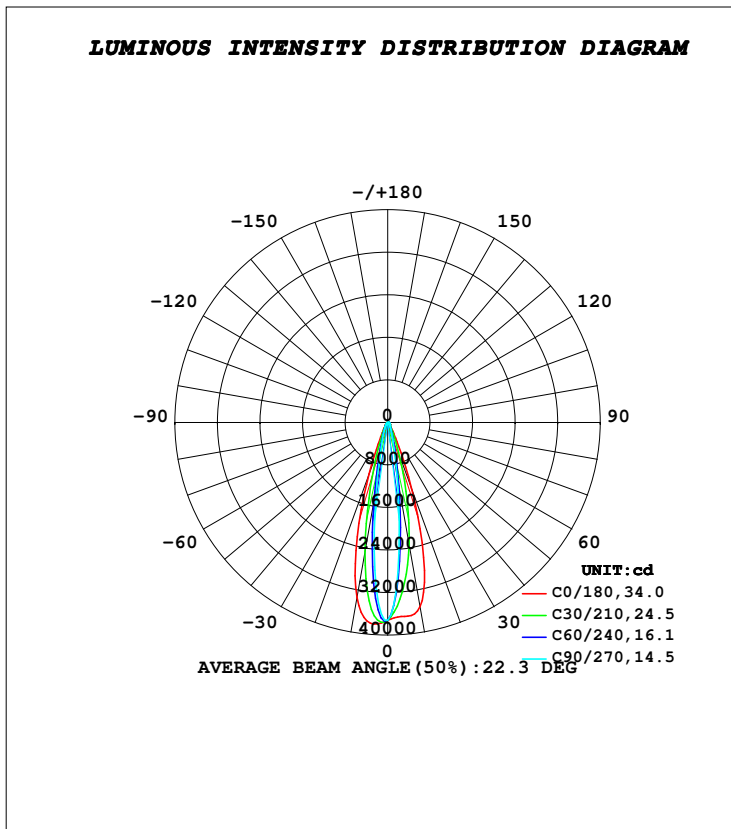


LUMINAIRE PHOTOMETRIC TEST REPORT

Test:U:230.57V I:0.3662A P:82.036W PF:0.9716 Freq:50.00Hz Lamp Flux:9023.96x1 lm		
NAME: LEVA-18	TYPE:LINEAR LIGHTING	WEIGHT:5.030kg
SPEC.:3000K, CREE, MEDIUM BEAM	DIM.: 1000 x 70 x 118	SERIAL No.:INT/2024/04/13
MFR.: K-LITE	SUR.:	Shielding Angle:

DATA OF LAMP		PHOTOMETRIC DATA			
MODEL	KL-4325	Imax (cd)	37994	S/MH (C0/180)	0.50
NOMINAL POWER (W)	90	LOR (%)	92.5	S/MH (C90/270)	0.27
RATED VOLTAGE (V)	230	TOTAL FLUX (lm)	8343.7	η UP, DN (C0-180)	0.0, 45.2
NOMINAL FLUX (lm)	9023.96	CIE CLASS	DIRECT	η UP, DN (C180-360)	0.0, 47.2
LAMPS INSIDE	1	η up (%)	0.0	CIBSE SHR NOM	0.00
TEST VOLTAGE (V)	230	η down (%)	92.5	CIBSE SHR MAX	1.00



C Range: 0 - 360DEG
C Interval: 10.0DEG
Test Speed: HIGH
Temperature: 25.6DEG
Operators: K-LITE
Test Date: 05 April 2024

γ Range: 0 - 90DEG
γ Interval: 1.0DEG
Test System: EVERFINE GO-R5000_V2 SYSTEM V2.00.417
Humidity: 41.5%
Test Distance: 1.997m [K=1.0000]
Remarks: