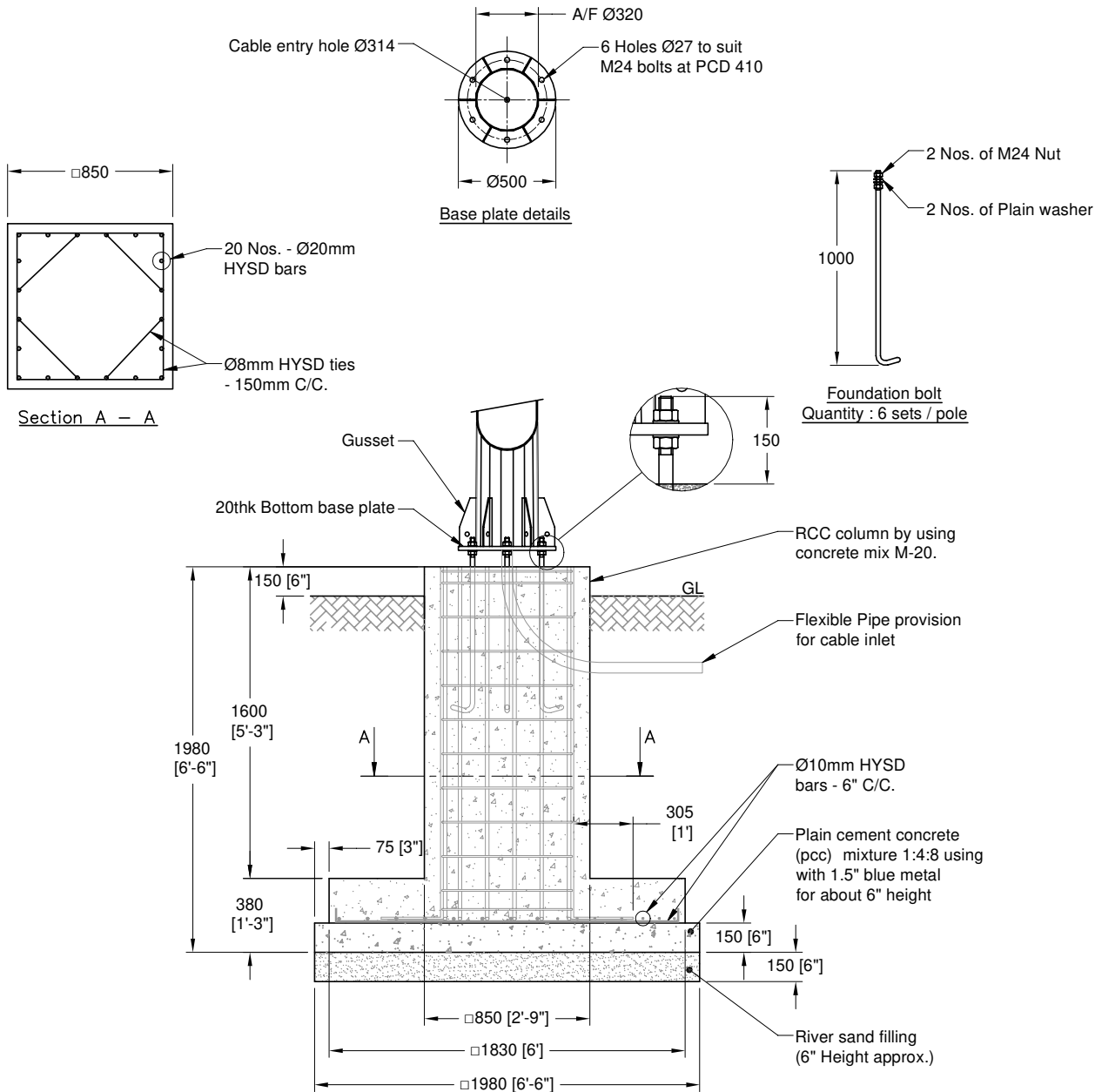


DWG. No. : KP-DFD-069-A
SHEET No. : 1 of 3

ALL DIMENSIONS ARE IN mm



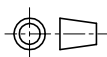
REV. No.	REVISION DETAILS	DATE	REVISED	CHD	APPD
05.	FOUNDATION BOLT HEIGHT CHANGED	11-10-19	THIRUPPATHI		
04.	2 Nos. NUT & WASHER REVISED	03-02-17	SATHISH		
03.	COMPANY NAME REVISED	19-10-16	SATHISH		
02.	FOUNDATION BOLT MODEL REVISED	20-04-16	SATHISH		
01.	FOUNDATION SPEC DETAILS REVISED	19-02-16	SATHISH		

DRAWN SELVA CHECKED APPROVED DATE 14-07-15 SCALE 1 : 35 MATERIAL -

Z:\KP\005.FOUNDATION DETAILS\KP - DFD - 069 (KP-55)12m HIGHMAST\KP - DFD - 069-A REV.05.dwg

DETAILED FOUNDATION DRAWING FOR KP - 55.1
12m - HIGH MAST

K-LITE **K-LITE INDUSTRIES**
CHENNAI-600 068

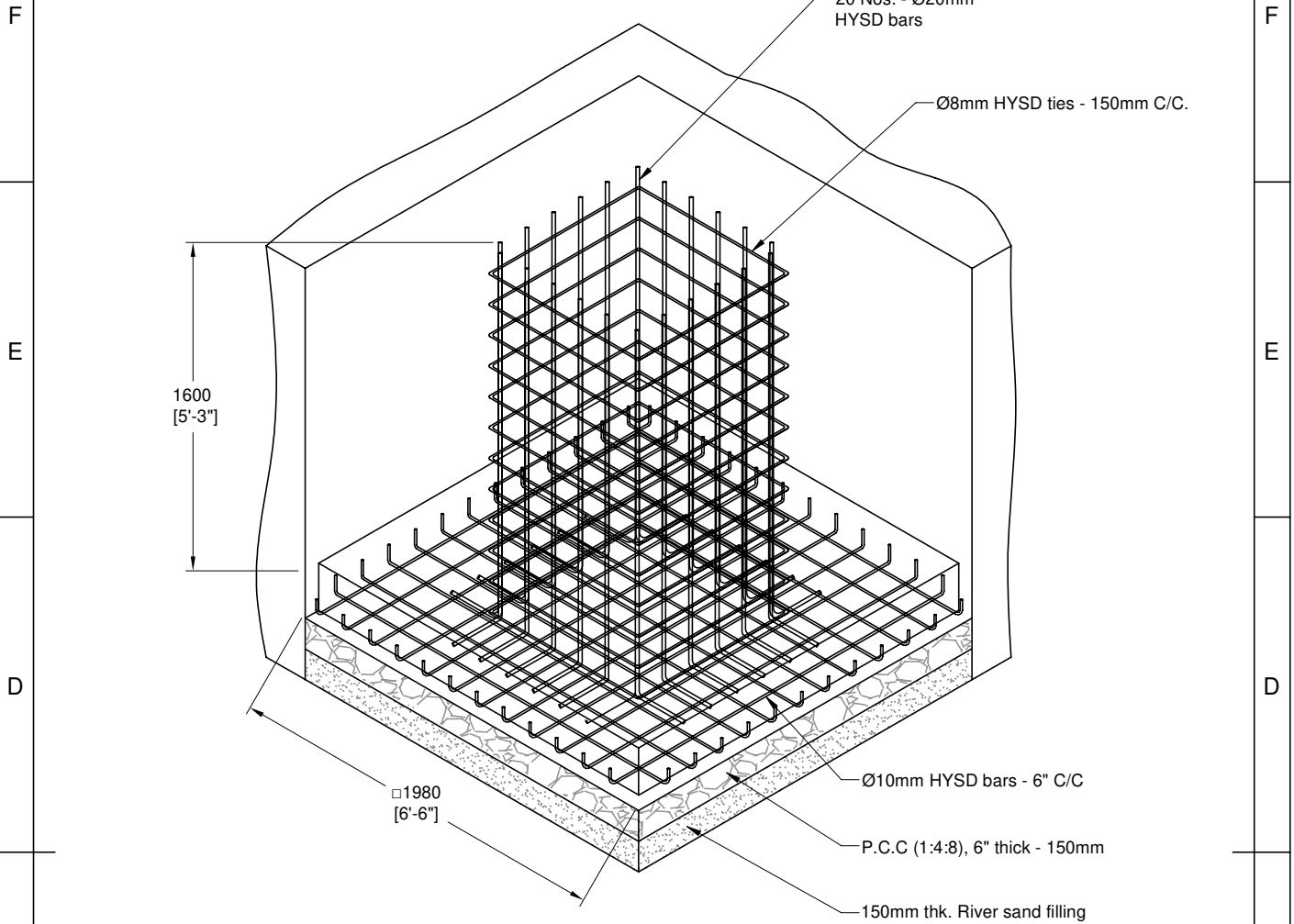


DRG. NO. KP-DFD-069-A

REV 05 SHEET 1 of 3

DWG. No. : KP-DFD-069-A
SHEET No. : 2 of 3

ALL DIMENSIONS ARE IN mm



Note:

- The grade of concrete mix for all R.C.C. works shall be M-20 conforming to IS 456 - 2000.
- Reinf. steel shall be HYSD bars conforming to 1786 - 1985 with minimum yield strength of 415 N/mm² (grade Fe415).
- Clear cover to the main reinforcement
Isolated Footing = 2" / 50mm
Columns = 1.5" / 40mm
- Potable water should be used for all the concrete works.
- Use 2" needle vibrators for all RCC works.
- Before pouring concrete the reinforcement tied & laid should be checked by a structural engineer.

05.	FOUNDATION BOLT HEIGHT CHANGED	11-10-19	THIRUPPATHI		
04.	2 Nos. NUT & WASHER REVISED	03-02-17	SATHISH		
03.	COMPANY NAME REVISED	19-10-16	SATHISH		
02.	FOUNDATION BOLT MODEL REVISED	20-04-16	SATHISH		
01.	FOUNDATION SPEC DETAILS REVISED	19-02-16	SATHISH		
REV. No.	REVISION DETAILS	DATE	REVISED	CHD	APPD

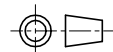
DRAWN SELVA CHECKED APPROVED DATE 14-07-15 SCALE 1 : 35 MATERIAL -

Z:\KP\005.FOUNDATION DETAILS\KP - DFD - 069 (KP-55)\12m HIGHMAST\KP - DFD - 069-A REV 05.dwg

DETAILED FOUNDATION DRAWING FOR KP - 55.1
12m - HIGH MAST

K-LITE

K-LITE INDUSTRIES
CHENNAI-600 068



DRG. NO.

KP-DFD-069-A

REV 05

SHEET 2 of 3

1

2 IF IN DOUBT ASK. DO NOT SCALE.

3

4

DWG. No. : KP-DFD-069-A
SHEET No. : 3 of 3

ALL DIMENSIONS ARE IN mm

ABSTRACT ESTIMATE

BILL OF MATERIAL FOR THE FOUNDATION OF PROPOSED CONSTRUCTION
OF 12m HIGH MAST

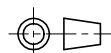
S.No.	DESCRIPTION OF WORK	QUANTITY
01.	Earthwork excavation for column foundation in all kind of soils including cost of materials and labour charges.	8.35 M ³
02.	Sand filling for column foundation using river sand including cost of materials, labour charges spreading and consolidating etc.	0.60 M ³
03.	PCC 1:4:8 using 40mm stone jelly below column footing foundation including cost of materials and labour charges.	0.60 M ³
04.	RCC 1:2:3 (M20) for column footing & column using 20mm stone jelly including cost of materials & labour charges, excluding steel, but including centering charges.	2.43 M ³
05.	Steel for all RCC works including barbending, tying and placing in position.	157 kg

05.	FOUNDATION BOLT HEIGHT CHANGED	11-10-19	THIRUPPATHI		
04.	2 Nos. NUT & WASHER REVISED	03-02-17	SATHISH		
03.	COMPANY NAME REVISED	19-10-16	SATHISH		
02.	FOUNDATION BOLT MODEL REVISED	20-04-16	SATHISH		
01.	FOUNDATION SPEC DETAILS REVISED	19-02-16	SATHISH		
REV. No.	REVISION DETAILS	DATE	REVISED	CHD	APPD

DRAWN SELVA	CHECKED	APPROVED	DATE 14-07-15	SCALE 1 : 25	MATERIAL -
----------------	---------	----------	------------------	-----------------	---------------

Z:\KP\005.FOUNDATION DETAILS\KP - DFD - 069 (KP-55)\12m HIGHMAST\KP - DFD - 069-A REV 05.dwg

DETAILED FOUNDATION DRAWING FOR KP - 55.1
12m - HIGH MAST FOUNDATION SPEC SHEET

K-LITE**K-LITE INDUSTRIES**
CHENNAI-600 058

DRG. NO.

KP-DFD-069-A

REV
05SHEET
3 of 3

1

2

3

4