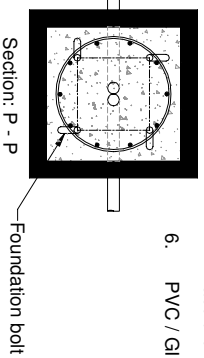
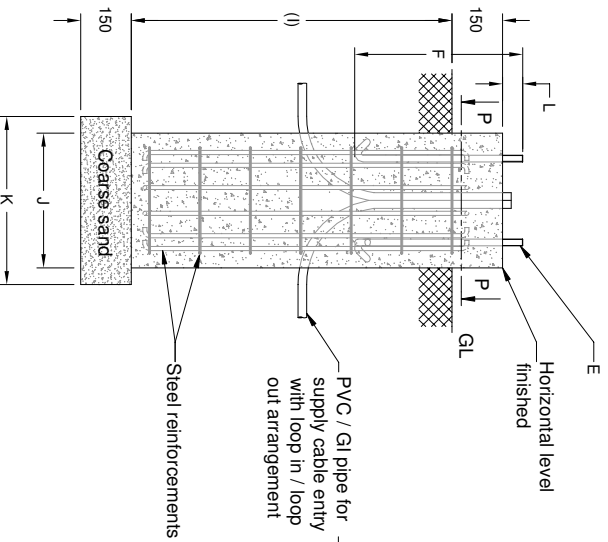
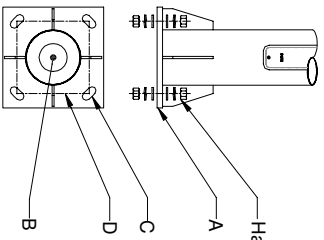


STANDARD CONICAL POLE BASE PLATE DETAILS									
Figure	Base plate (A)	Cable entry Hole(B)	No. of holes/ bolts (C)	CC (D)	Foundation bolt projection height (L)	Bolt (E)	RCC Height below GL / Digging depth (I)	Length of RCC layer (J)	Length of coarse sand layer (K)
KP-53.1	□ 250 x 121hk	Ø70	4	180	75	M16	1000	□ 400	□ 500
KP-53.2	□ 300 x 161hk	Ø70	4	215	90	M20	1000	□ 400	□ 500
KP-53.3	□ 300 x 161hk	Ø70	4	215	90	M20	1200	□ 400	□ 500
KP-53.4	□ 300 x 161hk	Ø70	4	215	90	M20	1200	□ 400	□ 500
KP-53.5	□ 400 x 161hk	Ø125	4	300	90	M20	1500	□ 500	□ 600
KP-53.6	□ 400 x 161hk	Ø125	4	300	90	M20	1800	□ 500	□ 600
KP-53.7	□ 400 x 161hk	Ø125	4	300	125	M24	1800	□ 500	□ 600

Note :

1. Typical foundation drawing for standard soil condition.
2. Parameters considered in RCC foundation design :
Load bearing capacity of soil (LBC) : 10 Ml/m² (Minimum)
Basic wind speed : 50 m/s
Grade of steel reinforcement : Fe 415
Grade of foundation bolt : 4.6
3. Height of foundation above ground level (150mm) may be revised to suit the site conditions especially considering the expected water level stagnation.
4. Template supplied is suggested to be used for locating the CC of foundation bolts.
5. 4 Nos. of foundation bolt have to be oriented (located), while casting the foundation such that the door of the electrical junction box face the required direction.
6. PVC / GI pipe for entry of supply cable and the materials required for foundation are not scope of our supply.



04.	CABLE ENTRY HOLE REVISED	13-02-19	SATHISH
03.	CABLE ENTRY HOLE FOR 6m & 7m REVISED	03-02-18	BASKAR
02.	10m, 11m & 12m. DOOR SIZE REVISED	02-06-17	SATHISH
01.	DESIGN REVISED	27-01-17	SATHISH
REV. No.	REVISION DETAILS	DATE	REVISED
			CHD
			APPD

DRAWN	CHECKED	APPROVED	DATE	SCALE	MATERIAL
G.K.SUNDAR			15-09-14	1 : 35	

DETAILED FOUNDATION DRAWING FOR KP - 53
SURFACE MOUNTED CONICAL POLE

K-LITE
K-LITE INDUSTRIES
CHENNAI-600 058

DRG. NO. KP-DFD-071

REV 04 SHEET 1 of 1