

Job No. : 0NTEESH
 DWG. No. : 0N.DWG.

1 2 3 IF IN DOUBT ASK, DO NOT SCALE. 4 5 6 FORMAT No. KL/DS/40-01 (A4)

ALL DIMENSIONS ARE IN MM

STANDARD CONICAL POLE BASE PLATE DETAILS

Figure	Base plate (A)	Cable entry Hole(B)	No. of holes/ bolts (C)	CC (D)	Foundation bolt projection height (L)	Bolt (E)	Length (F)	RCC Height below GL / Digging depth (I)	Length of RCC layer (J)	Length of coarse sand layer (K)
KP-53.1	□250 x 12thk	Ø70	4	180	75	M16	500	1000	□400	□500
KP-53.2	□300 x 16thk	Ø70	4	215	90	M20	500	1000	□400	□500
KP-53.3	□300 x 16thk	Ø70	4	215	90	M20	500	1200	□400	□500
KP-53.4	□300 x 16thk	Ø70	4	215	90	M20	500	1200	□400	□500
KP-53.5	□400 x 16thk	Ø125	4	300	90	M20	700	1500	□500	□600
KP-53.6	□400 x 16thk	Ø125	4	300	90	M20	700	1800	□500	□600
KP-53.7	□400 x 16thk	Ø125	4	300	125	M24	1000	1800	□500	□600

Note :

1. Typical foundation drawing. Contact local site engineer for detailed drawing.
2. Parameters considered in RCC foundation design :
 Load bearing capacity of soil (LBC) : 10 Mt/m² (Minimum)
 Grade of steel reinforcement : Fe 415
 Grade of foundation bolt : 4.6

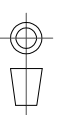
3. Height of foundation above ground level (150mm) may be revised to suit the site conditions especially considering the expected water level stagnation.
4. Template supplied is suggested to be used for locating the CC of foundation bolts.
5. 4 Nos. of foundation bolts have to be oriented (located), while casting the foundation such that the door of the electrical junction box faces the required direction.

6. PVC / GI pipe for entry of supply cable and the materials required for foundation are not scope of our supply.

05.	DESIGN REVISED	02-12-24	SANKAR		
04.	CABLE ENTRY HOLE REVISED	13-02-19	SATHISH		
03.	CABLE ENTRY HOLE FOR 6m & 7m REVISED	03-02-18	BASKAR		
02.	10m, 11m & 12m, DOOR SIZE REVISED	02-06-17	SATHISH		
01.	DESIGN REVISED	27-01-17	SATHISH		
REV. No.	REVISION DETAILS	DATE	REVISED	CHD	APPD

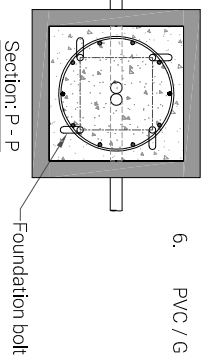
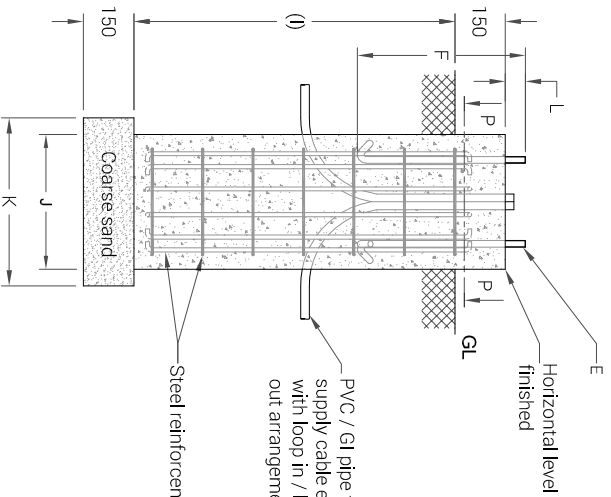
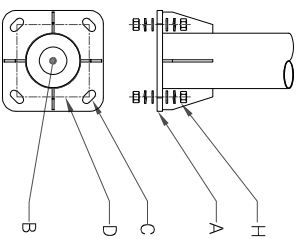
Y:\KP005.FOUNDATION DETAIL SKP-DFD-071 (KP-53)\KP-DFD-071 (KP-53).REV 05.dwg

DETAILED FOUNDATION DRAWING FOR KP - 53
 SURFACE MOUNTED CONICAL POLE



DRG. NO. KP-DFD-071

REV 05 SHEET 1 of 1



DRAWN G.K.SUNDAR

CHECKED

APPROVED

DATE 15-09-14

SCALE 1 : 35 MATERIAL

K-LITE

K-LITE INDUSTRIES PRIVATE LIMITED
 CHENNAI-600 058

1 2 3 4 5 6