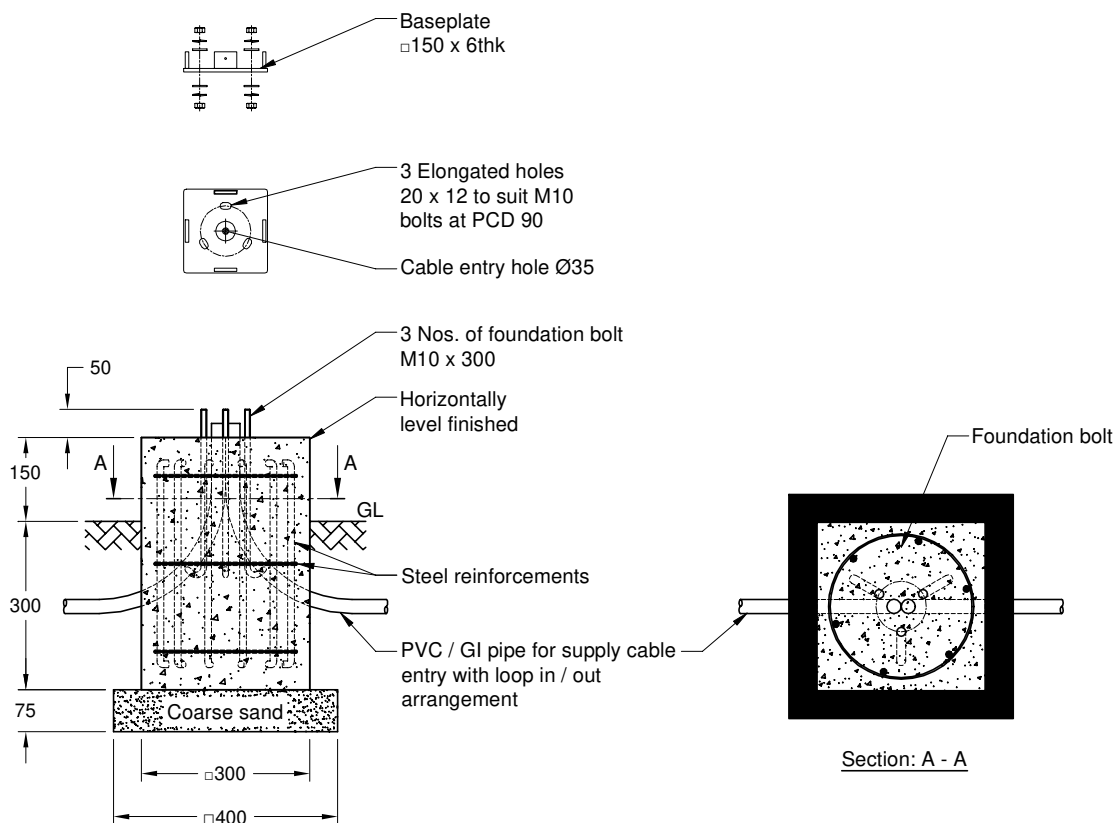


DWG. No. : KL-DFD-063  
SHEET No. : 1 of 1

ALL DIMENSIONS ARE IN mm



**Note**

1. Typical foundation drawing for standard soil condition.
2. Parameters considered in RCC foundation design :
  - Load bearing capacity of soil (LBC) : 10 Mt/m<sup>2</sup> (Minimum)
  - Basic wind speed : 50 m/s
  - Grade of steel reinforcement : Fe 415
  - Grade of foundation bolt : 4.6
3. Height of foundation above ground level (150mm) may be revised to suit the site conditions especially considering the expected water level stagnation.
4. Template supplied is suggested to be used for locating the PCD of foundation bolts.
5. 4 Nos. of foundation bolt have to be oriented (located), while casting the foundation such that the door of the electrical junction box face the required direction.
6. PVC / GI pipes for entry of supply cable and the materials required for foundation are not scope of our supply.

REV. No.	REVISION DETAILS	DATE	REVISED	CHD	APPD

DRAWN R.SATHISH	CHECKED	APPROVED	DATE 15-02-19	SCALE 1 : 14	MATERIAL -	Z:\K - LITE\006.FOUNDATION DETAILS\KL - DFD - 089 (M36)\KL - DFD - 089 (M36),REV 00.dwg
--------------------	---------	----------	------------------	-----------------	---------------	---

	<b>K-LITE INDUSTRIES</b> CHENNAI-600 058	DETAILED FOUNDATION DRAWING FOR M36 □150 x 6 (FOUNDATION BOLT M10 x 300)			
			DRG. NO. <b>KL-DFD-089</b>	REV 00	SHEET 1 of 1