

Job No. : 082
 DWG. No. : 082

1 2 3 IF IN DOUBT ASK, DO NOT SCALE. 4 5 6 FORMAT No. KL/DS/40-01 (A4)

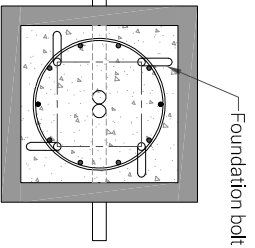
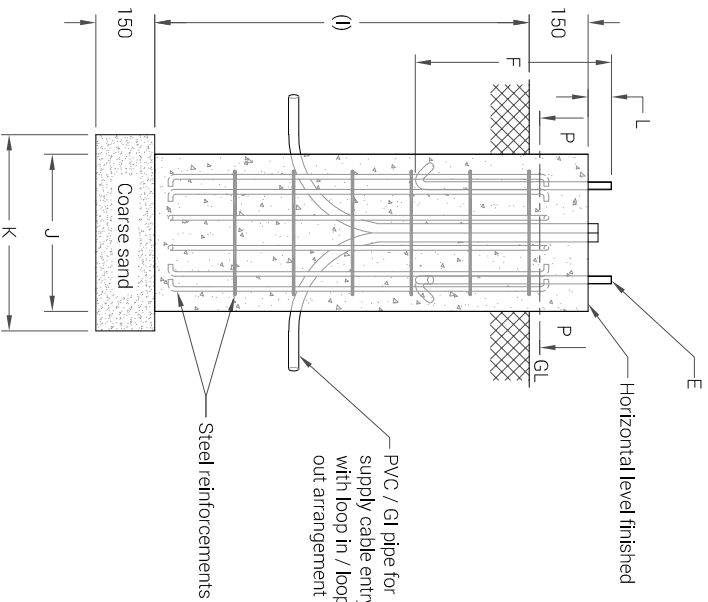
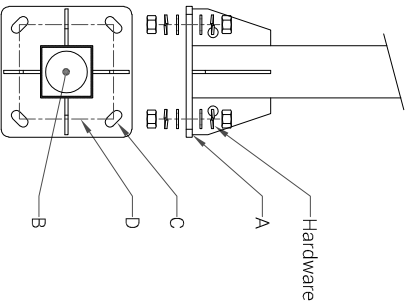
ALL DIMENSIONS ARE IN MM

K - LITE STANDARD (S1) POLE FOUNDATION DETAILS

| Figure | Base plate (A) | Cable entry Hole(B) | No. of holes/ bolts (C) | CC (D) | Foundation bolt projection height (I) | Bolt (E) | Length (F) | RCC Height below GL / Digging depth (I) | Length of RCC layer (J) | Length of coarse sand layer (K) |
|---------|----------------|---------------------|-------------------------|--------|---------------------------------------|----------|------------|---|-------------------------|---------------------------------|
| KP-57.3 | 250 x 12hk | Ø70 | 4 | 180 | 75 | M16 | 500 | 1000 | 400 | 500 |
| KP-57.4 | 250 x 12hk | Ø70 | 4 | 180 | 75 | M16 | 500 | 1000 | 400 | 500 |
| KP-57.5 | 300 x 16hk | Ø70 | 4 | 215 | 90 | M20 | 500 | 1200 | 400 | 500 |
| KP-57.7 | 300 x 16hk | Ø70 | 4 | 215 | 90 | M20 | 500 | 1200 | 400 | 500 |
| KP-57.8 | 400 x 16hk | Ø125 | 4 | 300 | 90 | M20 | 700 | 1800 | 500 | 600 |

Note:

1. Typical foundation drawing. Contact local site engineer for detailed drawing.
2. Parameters considered in RCC foundation design :
 Load bearing capacity of soil (LBC) : 10 Mt/m² (Minimum)
 Grade of steel reinforcement : Fe 415
 Grade of foundation bolt : 4.6
3. Height of foundation above ground level (150mm) may be revised to suit the site conditions especially considering the expected water level stagnation.
4. Template supplied is suggested to be used for locating the CC of foundation bolts.
5. 4 Nos. of foundation bolt have to be oriented (located), while casting the foundation such that the door of the electrical junction box face the required direction.
6. PVC / GI pipe for entry of supply cable and the materials required for foundation are not scope of our supply.



Section: P - P

| REV. No. | REVISION DETAILS | DATE | REVISED | CHD | APPD |
|----------|--|----------|------------|-----|------|
| 06 | DESIGN REVISED | 04-12-24 | SANKAR | | |
| 05 | ELECTRICAL JUNCTION BOX REVISED | 12-06-19 | THIRUPATHI | | |
| 04 | CABLE ENTRY HOLE REVISED | 13-02-19 | SATHISH | | |
| 03 | FOUNDATION No. 57.7,57.8 ELECTRICAL JUNCTION BOX SIZE REVISED. | 14-11-17 | BASKAR | | |
| 02 | COMPANY NAME REVISED | 17-09-16 | SATHISH | | |
| 01 | Fig.3,4,5,9 CABLE ENTRY HOLE REVISED | 24-12-15 | SATHISH | | |

| DRAWN | CHECKED | APPROVED | DATE | SCALE | MATERIAL |
|------------|---------|----------|----------|--------|----------|
| THIRUPATHI | | | 27-03-15 | 1 : 30 | |

DETAILED FOUNDATION DRAWING FOR KP - 57
 SURFACE MOUNTED SQUARE POLE

K-LITE

**K-LITE INDUSTRIES
 PRIVATE LIMITED**
 CHENNAI-600 058

DRG. NO.
 KP-DFD-082

REV 06
 SHEET 1 of 1

1 2 3 4 5 6