

Facade luminaires with Hybrid optics, downwards for ambient lighting and orientation, upwards to accentuate architectural elements, Precise lighting for where it is required. Aesthetically shaped wall mounted luminaire with fully shielded light source for striking light effects.

### Product Description

- Luminaire made of die-cast aluminium, aluminium & SS fasteners.
- Clear safety tempered glass.
- Silicone gasket
- Hybrid optics with lens & reflector combination for higher efficiency, lower optical losses with optimum glare suppression.
- Die Cast aluminium base for easy installation onto the wall / column.
- Cable entries for through-wiring of mains supply cable.
- Integral constant current power supply
- CRI ( Ra ) :  $\geq 80$  ( 90 CRI - On Request )
- Prewired with LED driver and suitable for operating on 240V, 50Hz single phase ac supply.
- Ordering guide : KL-7897-CCT (Colour Temperature)
- Available CCT : 3000K, 4000K (CW on request)






 >60,000Hrs  
 L70 B10 SDCM $\leq$  3
  100-277V 50-60Hz

### Product Benefits

- Sturdy construction in order to maintain performance of the luminaire and to reduce maintenance costs.
- Quick & simple installation with low maintenance.
- Clear glass in the front with continuous silicone gasket to ensure adequate sealing.
- Sustainable LED technology offers durability and optimal light output with low power consumption.

### Area of Application

Residential, Building facade, Commercial centres, Passages, Pathways, Sculptures and Structures.

### Available Finish

Pure polyester powder coated

- Graphite grey
- Anthracite grey (RAL : 7016)
- Jet black (RAL : 9005)





Technical Specifications

General

ID	: 7897 / 7898
System Wattage	: 6W / 2 x 6W LED
Driver Integral	: Constant Current
Input Voltage	: 230-240Vac
Frequency	: 50-60 Hz
Operating Voltage	: 100-277Vac
Operating Temperature	: -15°C~+50°C

Physical

Body	: Extruded aluminium
Reflector	: Mirror finish pure AL
Diffuser	: Clear tempered glass
Mounting	: Surface - Wall
Finish	: Graphite Grey Anthracite Grey Jet Black

Light Source

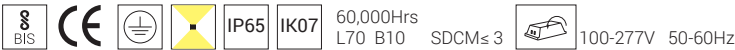
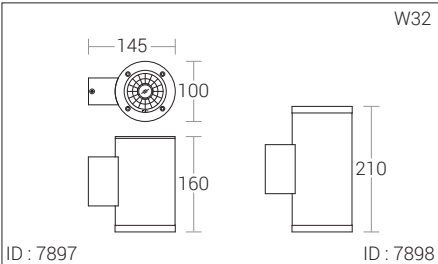
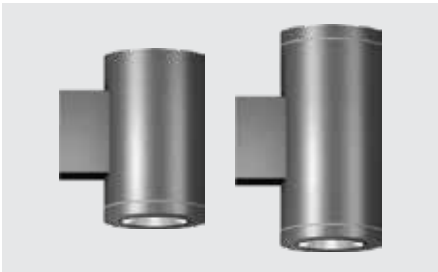
Light Source	: CITIZEN COB
LED Lumens	: 900 lm / 2 x 900 lm
CRI (Ra)	: >80
LED Colour Temperature	: 3000K / 4000K

Driver

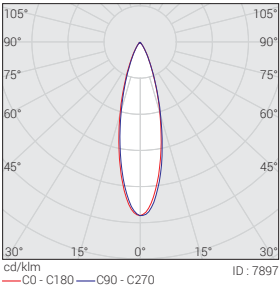
Power Supply	: Integral
Power Factor	: ≥0.90
THD	: <10%
Surge Protection	: 2.5KV
Efficiency	: 80%

Optical Performance

Colour Temperature	: 3000K
Luminous flux	: 512 lm
Beam Angle	: 15° / 25° / 40°



Photometric Data



Cone Diagram

