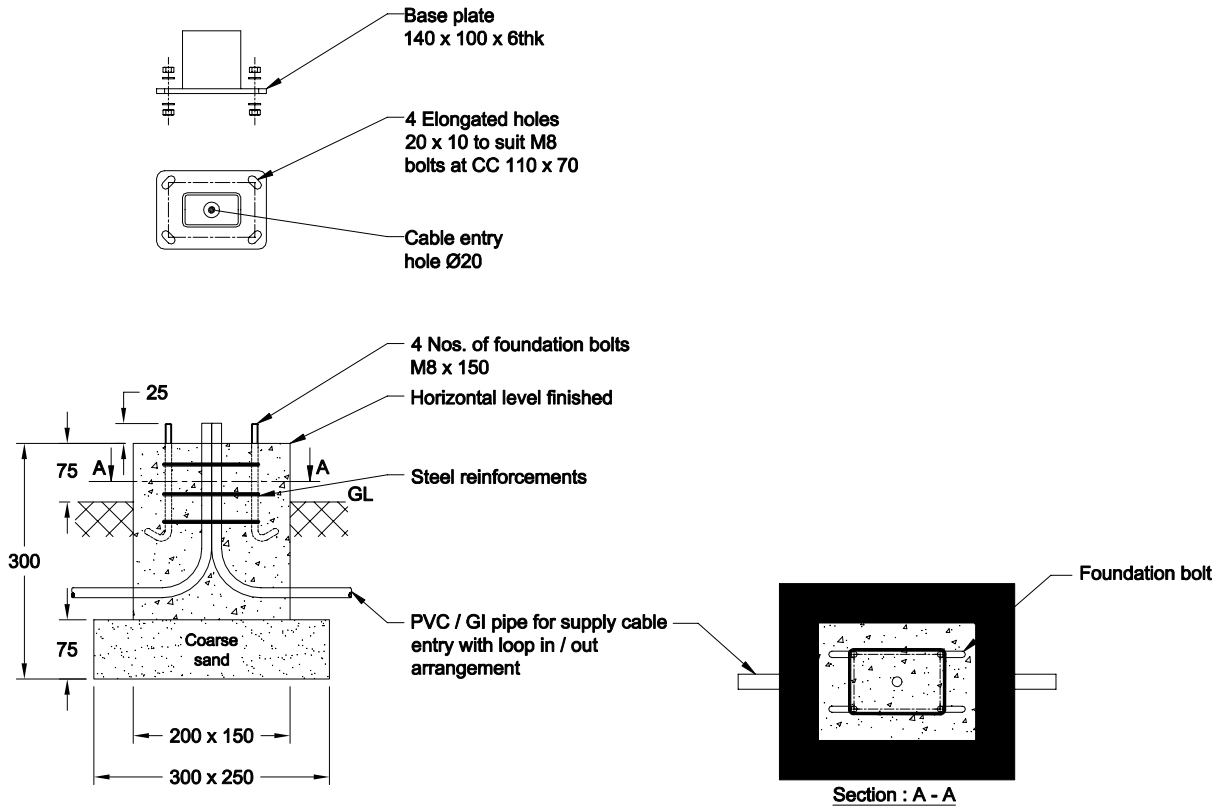


DWG. No. : KL-DFD-056
SHEET NO. : 1 of 1

ALL DIMENSIONS ARE IN mm



Note

- Typical foundation drawing suitable for standard soil condition.
- Parameters considered in RCC foundation design :
 - Load bearing capacity of soil (LBC) : 10 Mt/m² (Minimum)
 - Basic wind speed : 50 m/s
 - Grade of steel reinforcement : Fe 415
 - Grade of foundation bolt : 4.6
- Height of foundation above ground level (76mm) may be revised to suit the site conditions especially considering the expected water level.
- Template supplied is suggested to be used for locating the CC of foundation bolts.
- 4 Nos. of foundation bolt have to be oriented (located), while casting the foundation such that the door of the electrical junction box face the required direction.
- PVC / GI pipe for entry of supply cable and the materials required for foundation are not scope of our supply.

02.	CABLE ENTRY HOLE REVISED	29-11-19	THIRUPPATHI		
01.	BASE PLATE REVISED	09-05-18	BASKAR		
REV. No.	REVISION DETAILS	DATE	REVISED	CHD	APPD

DRAWN R.SATHISH	CHECKED	APPROVED	DATE 24-01-17	SCALE 1 : 10	MATERIAL	NKFS\cadd server\K - LITE\006.FOUNDATION DETAILS\KL - DFD - 056\REV 02.dwg				
K-LITE		K-LITE INDUSTRIES CHENNAI-600 058				DETAILED FOUNDATION DRAWING FOR M23 140 x 100 x 6 (FOUNDATION BOLT M8 x 150)				
							DRG. NO. KL-DFD-056	REV 02	SHEET 1 of 1	