

1

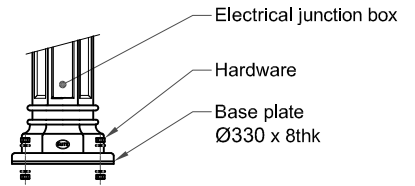
2 IF IN DOUBT ASK. DO NOT SCALE.

3

4

DWG. No. : KP-DFD-073  
SHEET. No. : 1 of 1

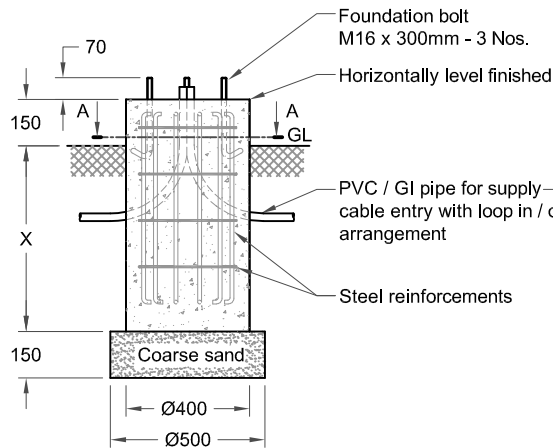
ALL DIMENSIONS ARE IN mm



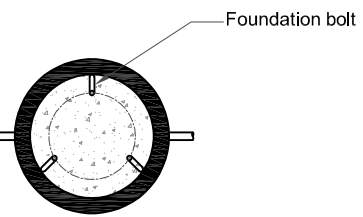
3 holes Ø19 to suit M16 bolts at PCD 280



Cable entry hole Ø70



FOUNDATION TYPE	DIMENSION X	POLE HEIGHT
A	600	8' - 10'
B	800	10' - 12'
C	1000	12' - 14'



Section: A - A

#### Note

- Typical foundation drawing suitable for standard soil condition.
- Parameters considered in RCC foundation design :
  - Load bearing capacity of soil (LBC) : 10 Mt/m<sup>2</sup> (Minimum)
  - Basic wind speed : 50 m/s
  - Grade of steel reinforcement : Fe 415
  - Grade of foundation bolt : 4.6
- Height of foundation above ground level (150mm) may be revised to suit the site conditions especially considering the expected water level stagnation.
- Template supplied is suggested to be used for locating the PCD of foundation bolts.
- 3 Nos. of foundation bolt have to be oriented (located), while casting the foundation such that the door of the electrical junction box faces the required direction.
- PVC / GI pipe for entry of supply cable and the materials required for foundation are not scope of our supply.

04.	REMOVE 3Nos. OF HOLE	19-03-18	SATHISH		
03.	3 Nos. OF HOLE FROM Ø6mm TO Ø7mm REVISED	02-06-17	SATHISH		
02.	DESIGN REVISED	24-01-07	SATHISH		
01.	COMPANY NAME REVISED	01-09-16	SATHISH		
REV. No.	REVISION DETAILS	DATE	REVISED	CHD	APPD

DRAWN  
ARIEF

CHECKED

APPROVED

DATE  
13-12-14

SCALE  
1 : 25

MATERIAL  
-

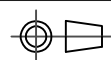
Z:\KPI\005.FOUNDATION DETAILS\KP - DFD - 073\REV 04.dwg



**K-LITE INDUSTRIES**

CHENNAI - 600 098

DETAILED FOUNDATION DRAWING FOR KP - 32  
Ø330 x 8 (FOUNDATION BOLT M16 x 300)



DRG. NO.

**KP-DFD-073**

REV  
04

SHEET  
1 of 1

1

2

3

4